



February 2011
Impedance Matching Utility

© **Agilent Technologies, Inc. 2000-2011**

5301 Stevens Creek Blvd., Santa Clara, CA 95052 USA

No part of this documentation may be reproduced in any form or by any means (including electronic storage and retrieval or translation into a foreign language) without prior agreement and written consent from Agilent Technologies, Inc. as governed by United States and international copyright laws.

Acknowledgments

Mentor Graphics is a trademark of Mentor Graphics Corporation in the U.S. and other countries. Mentor products and processes are registered trademarks of Mentor Graphics Corporation. * Calibre is a trademark of Mentor Graphics Corporation in the US and other countries. "Microsoft®, Windows®, MS Windows®, Windows NT®, Windows 2000® and Windows Internet Explorer® are U.S. registered trademarks of Microsoft Corporation. Pentium® is a U.S. registered trademark of Intel Corporation. PostScript® and Acrobat® are trademarks of Adobe Systems Incorporated. UNIX® is a registered trademark of the Open Group. Oracle and Java and registered trademarks of Oracle and/or its affiliates. Other names may be trademarks of their respective owners. SystemC® is a registered trademark of Open SystemC Initiative, Inc. in the United States and other countries and is used with permission. MATLAB® is a U.S. registered trademark of The Math Works, Inc.. HiSIM2 source code, and all copyrights, trade secrets or other intellectual property rights in and to the source code in its entirety, is owned by Hiroshima University and STARC. FLEXIm is a trademark of Globetrotter Software, Incorporated. Layout Boolean Engine by Klaas Holwerda, v1.7 <http://www.xs4all.nl/~kholwerd/bool.html> . FreeType Project, Copyright (c) 1996-1999 by David Turner, Robert Wilhelm, and Werner Lemberg. QuestAgent search engine (c) 2000-2002, JObjects. Motif is a trademark of the Open Software Foundation. Netscape is a trademark of Netscape Communications Corporation. Netscape Portable Runtime (NSPR), Copyright (c) 1998-2003 The Mozilla Organization. A copy of the Mozilla Public License is at <http://www.mozilla.org/MPL/> . FFTW, The Fastest Fourier Transform in the West, Copyright (c) 1997-1999 Massachusetts Institute of Technology. All rights reserved.

The following third-party libraries are used by the NlogN Momentum solver:

"This program includes Metis 4.0, Copyright © 1998, Regents of the University of Minnesota", <http://www.cs.umn.edu/~metis> , METIS was written by George Karypis (karypis@cs.umn.edu).

Intel@ Math Kernel Library, <http://www.intel.com/software/products/mkl>

SuperLU_MT version 2.0 - Copyright © 2003, The Regents of the University of California, through Lawrence Berkeley National Laboratory (subject to receipt of any required approvals from U.S. Dept. of Energy). All rights reserved. SuperLU Disclaimer: THIS SOFTWARE IS PROVIDED BY THE COPYRIGHT HOLDERS AND CONTRIBUTORS "AS IS" AND ANY EXPRESS OR IMPLIED WARRANTIES, INCLUDING, BUT NOT LIMITED TO, THE IMPLIED WARRANTIES OF MERCHANTABILITY AND FITNESS FOR A PARTICULAR PURPOSE ARE DISCLAIMED. IN NO EVENT SHALL THE COPYRIGHT OWNER OR CONTRIBUTORS BE LIABLE FOR ANY DIRECT, INDIRECT, INCIDENTAL, SPECIAL, EXEMPLARY, OR CONSEQUENTIAL DAMAGES (INCLUDING, BUT NOT LIMITED TO, PROCUREMENT OF

SUBSTITUTE GOODS OR SERVICES; LOSS OF USE, DATA, OR PROFITS; OR BUSINESS INTERRUPTION) HOWEVER CAUSED AND ON ANY THEORY OF LIABILITY, WHETHER IN CONTRACT, STRICT LIABILITY, OR TORT (INCLUDING NEGLIGENCE OR OTHERWISE) ARISING IN ANY WAY OUT OF THE USE OF THIS SOFTWARE, EVEN IF ADVISED OF THE POSSIBILITY OF SUCH DAMAGE.

7-zip - 7-Zip Copyright: Copyright (C) 1999-2009 Igor Pavlov. Licenses for files are: 7z.dll: GNU LGPL + unRAR restriction, All other files: GNU LGPL. 7-zip License: This library is free software; you can redistribute it and/or modify it under the terms of the GNU Lesser General Public License as published by the Free Software Foundation; either version 2.1 of the License, or (at your option) any later version. This library is distributed in the hope that it will be useful, but WITHOUT ANY WARRANTY; without even the implied warranty of MERCHANTABILITY or FITNESS FOR A PARTICULAR PURPOSE. See the GNU Lesser General Public License for more details. You should have received a copy of the GNU Lesser General Public License along with this library; if not, write to the Free Software Foundation, Inc., 59 Temple Place, Suite 330, Boston, MA 02111-1307 USA. unRAR copyright: The decompression engine for RAR archives was developed using source code of unRAR program. All copyrights to original unRAR code are owned by Alexander Roshal. unRAR License: The unRAR sources cannot be used to re-create the RAR compression algorithm, which is proprietary. Distribution of modified unRAR sources in separate form or as a part of other software is permitted, provided that it is clearly stated in the documentation and source comments that the code may not be used to develop a RAR (WinRAR) compatible archiver. 7-zip Availability: <http://www.7-zip.org/>

AMD Version 2.2 - AMD Notice: The AMD code was modified. Used by permission. AMD copyright: AMD Version 2.2, Copyright © 2007 by Timothy A. Davis, Patrick R. Amestoy, and Iain S. Duff. All Rights Reserved. AMD License: Your use or distribution of AMD or any modified version of AMD implies that you agree to this License. This library is free software; you can redistribute it and/or modify it under the terms of the GNU Lesser General Public License as published by the Free Software Foundation; either version 2.1 of the License, or (at your option) any later version. This library is distributed in the hope that it will be useful, but WITHOUT ANY WARRANTY; without even the implied warranty of MERCHANTABILITY or FITNESS FOR A PARTICULAR PURPOSE. See the GNU Lesser General Public License for more details. You should have received a copy of the GNU Lesser General Public License along with this library; if not, write to the Free Software Foundation, Inc., 51 Franklin St, Fifth Floor, Boston, MA 02110-1301 USA Permission is hereby granted to use or copy this program under the terms of the GNU LGPL, provided that the Copyright, this License, and the Availability of the original version is retained on all copies. User documentation of any code that uses this code or any modified version of this code must cite the Copyright, this License, the Availability note, and "Used by permission." Permission to modify the code and to distribute modified code is granted, provided the Copyright, this License, and the Availability note are retained, and a notice that the code was modified is included. AMD Availability: <http://www.cise.ufl.edu/research/sparse/amd>

UMFPACK 5.0.2 - UMFPACK Notice: The UMFPACK code was modified. Used by permission. UMFPACK Copyright: UMFPACK Copyright © 1995-2006 by Timothy A. Davis. All Rights Reserved. UMFPACK License: Your use or distribution of UMFPACK or any modified version of UMFPACK implies that you agree to this License. This library is free software; you can redistribute it and/or modify it under the terms of the GNU Lesser General Public License

as published by the Free Software Foundation; either version 2.1 of the License, or (at your option) any later version. This library is distributed in the hope that it will be useful, but WITHOUT ANY WARRANTY; without even the implied warranty of MERCHANTABILITY or FITNESS FOR A PARTICULAR PURPOSE. See the GNU Lesser General Public License for more details. You should have received a copy of the GNU Lesser General Public License along with this library; if not, write to the Free Software Foundation, Inc., 51 Franklin St, Fifth Floor, Boston, MA 02110-1301 USA Permission is hereby granted to use or copy this program under the terms of the GNU LGPL, provided that the Copyright, this License, and the Availability of the original version is retained on all copies. User documentation of any code that uses this code or any modified version of this code must cite the Copyright, this License, the Availability note, and "Used by permission." Permission to modify the code and to distribute modified code is granted, provided the Copyright, this License, and the Availability note are retained, and a notice that the code was modified is included. UMFPACK Availability: <http://www.cise.ufl.edu/research/sparse/umfpack> UMFPACK (including versions 2.2.1 and earlier, in FORTRAN) is available at <http://www.cise.ufl.edu/research/sparse> . MA38 is available in the Harwell Subroutine Library. This version of UMFPACK includes a modified form of COLAMD Version 2.0, originally released on Jan. 31, 2000, also available at <http://www.cise.ufl.edu/research/sparse> . COLAMD V2.0 is also incorporated as a built-in function in MATLAB version 6.1, by The MathWorks, Inc. <http://www.mathworks.com> . COLAMD V1.0 appears as a column-preordering in SuperLU (SuperLU is available at <http://www.netlib.org>). UMFPACK v4.0 is a built-in routine in MATLAB 6.5. UMFPACK v4.3 is a built-in routine in MATLAB 7.1.

Qt Version 4.6.3 - Qt Notice: The Qt code was modified. Used by permission. Qt copyright: Qt Version 4.6.3, Copyright (c) 2010 by Nokia Corporation. All Rights Reserved. Qt License: Your use or distribution of Qt or any modified version of Qt implies that you agree to this License. This library is free software; you can redistribute it and/or modify it under the terms of the GNU Lesser General Public License as published by the Free Software Foundation; either version 2.1 of the License, or (at your option) any later version. This library is distributed in the hope that it will be useful, but WITHOUT ANY WARRANTY; without even the implied warranty of MERCHANTABILITY or FITNESS FOR A PARTICULAR PURPOSE. See the GNU Lesser General Public License for more details. You should have received a copy of the GNU Lesser General Public License along with this library; if not, write to the Free Software Foundation, Inc., 51 Franklin St, Fifth Floor, Boston, MA 02110-1301 USA Permission is hereby granted to use or copy this program under the terms of the GNU LGPL, provided that the Copyright, this License, and the Availability of the original version is retained on all copies. User documentation of any code that uses this code or any modified version of this code must cite the Copyright, this License, the Availability note, and "Used by permission." Permission to modify the code and to distribute modified code is granted, provided the Copyright, this License, and the Availability note are retained, and a notice that the code was modified is included. Qt Availability: <http://www.qtsoftware.com/downloads> Patches Applied to Qt can be found in the installation at: `$HPEESOF_DIR/prod/licenses/thirdparty/qt/patches`. You may also contact Brian Buchanan at Agilent Inc. at brian_buchanan@agilent.com for more information.

The HiSIM_HV source code, and all copyrights, trade secrets or other intellectual property rights in and to the source code, is owned by Hiroshima University and/or STARC.

Errata The ADS product may contain references to "HP" or "HPEESOF" such as in file names and directory names. The business entity formerly known as "HP EEsof" is now part of Agilent Technologies and is known as "Agilent EEsof". To avoid broken functionality and to maintain backward compatibility for our customers, we did not change all the names and labels that contain "HP" or "HPEESOF" references.

Warranty The material contained in this document is provided "as is", and is subject to being changed, without notice, in future editions. Further, to the maximum extent permitted by applicable law, Agilent disclaims all warranties, either express or implied, with regard to this documentation and any information contained herein, including but not limited to the implied warranties of merchantability and fitness for a particular purpose. Agilent shall not be liable for errors or for incidental or consequential damages in connection with the furnishing, use, or performance of this document or of any information contained herein. Should Agilent and the user have a separate written agreement with warranty terms covering the material in this document that conflict with these terms, the warranty terms in the separate agreement shall control.

Technology Licenses The hardware and/or software described in this document are furnished under a license and may be used or copied only in accordance with the terms of such license. Portions of this product include the SystemC software licensed under Open Source terms, which are available for download at <http://systemc.org/>. This software is redistributed by Agilent. The Contributors of the SystemC software provide this software "as is" and offer no warranty of any kind, express or implied, including without limitation warranties or conditions or title and non-infringement, and implied warranties or conditions merchantability and fitness for a particular purpose. Contributors shall not be liable for any damages of any kind including without limitation direct, indirect, special, incidental and consequential damages, such as lost profits. Any provisions that differ from this disclaimer are offered by Agilent only.

Restricted Rights Legend U.S. Government Restricted Rights. Software and technical data rights granted to the federal government include only those rights customarily provided to end user customers. Agilent provides this customary commercial license in Software and technical data pursuant to FAR 12.211 (Technical Data) and 12.212 (Computer Software) and, for the Department of Defense, DFARS 252.227-7015 (Technical Data - Commercial Items) and DFARS 227.7202-3 (Rights in Commercial Computer Software or Computer Software Documentation).

| | |
|--|----|
| Introducing the Impedance Matching Utility | 7 |
| Step-by-Step Example | 7 |
| Setting Up the Design Environment | 7 |
| Designing and Analyzing a Network | 11 |
| SmartComponent Reference for Impedance Matching Utility | 20 |
| LCBandpassMatch (Bandpass Match) | 20 |
| LCBandpassTransformer (Bandpass Transformer) | 22 |
| LCEllMatch (Two-Element "Ell" Narrowband Match) | 24 |
| LCHighpassMatch (Highpass Match) | 27 |
| LCLowpassMatch (Lowpass Match) | 29 |
| QuarterWaveMatch (Quarter Wave Match) | 32 |
| SingleStubMatch (Single-Stub Match) | 34 |
| TaperedLineMatch (Tapered Line Match) | 36 |
| References | 38 |
| Using Automated Assistants in Impedance Matching Utility | 39 |
| Automated Design and Analysis | 39 |
| Matching Assistant | 39 |
| Simulation Assistant | 45 |
| Yield Assistant | 47 |
| Display Assistant | 50 |
| Additional Transformation Functions | 58 |
| Using SmartComponents in Impedance Matching Utility | 61 |
| Placing and Editing SmartComponents | 61 |
| Copying SmartComponents | 63 |
| Deleting SmartComponents | 63 |
| Using SmartComponents as Standalone Components | 64 |

Introducing the Impedance Matching Utility

The *Impedance Matching* documentation provides an introduction to the Impedance Matching Utility. The complexity of the Advanced Design System (ADS) is made easily accessible through the automated capability. A first-time or casual ADS user can begin using the capability of ADS quickly, while experienced ADS users can perform tasks faster than ever before. The [Step-by-Step Example](#) describes how a singly terminated bandstop elliptical filter can be designed and verified, and a layout generated, in a few minutes.

The Impedance Matching Utility provides *SmartComponents* and automated-assistants for the design and simulation. All SmartComponents can be modified. You simply select a SmartComponent and, with little effort, redesign or verify their performance. The *Using SmartComponents* (dgfilter) section answers many common questions relating to Utility use and the *SmartComponent Reference* (dgfilter) describes each SmartComponent in detail. The section *Automated Design and Analysis* (dgfilter) introduces Automated Assistants.

Step-by-Step Example

The step-by-step example takes you through the design, analysis and sensitivity simulation of a bandpass lumped element matching network. After completing this example, you should have a basic understanding of the Utility and be ready to begin using the tool. Follow these steps to begin:

- [Setting Up the Design Environment](#)
- [Designing and Analyzing a Network](#)

Note

You should already be familiar with the basic features of Advanced Design System. For help with ADS basic features, refer to the *Schematic Capture and Layout* (usrguide) documentation.

Setting Up the Design Environment

Before you can use the Impedance Matching Utility, you must set up the design environment by using these steps:

- [Setting DesignGuide Preferences](#)
- [Opening a Workspace,](#)
- [Opening a Schematic Window,](#)

- [Opening the Impedance Matching Utility](#),
- [Displaying the SmartComponent Palette](#).

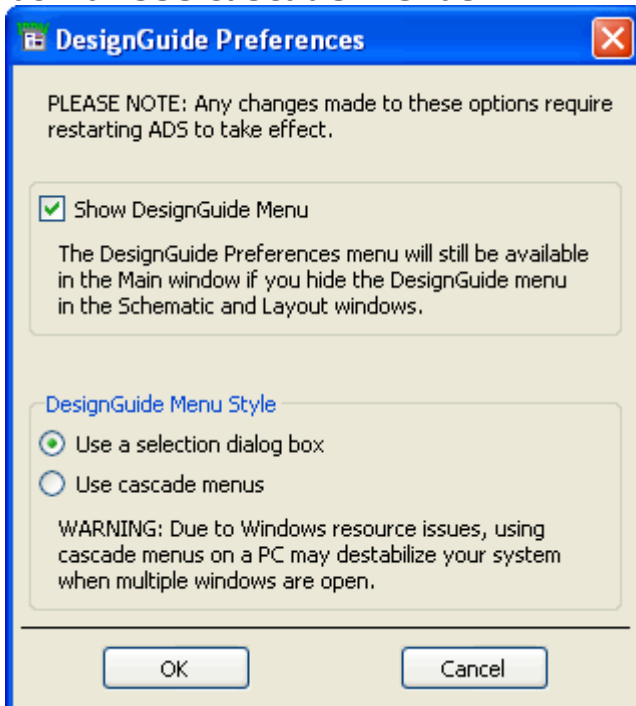
Note
Before beginning, you must install the DesignGuide with appropriate licensing codewords.

Setting DesignGuide Preferences

All DesignGuides can be accessed through either cascading menus or dialog boxes. You can configure your preferred method in the ADS Main window or from the Schematic window.

To configure access through menus or dialog boxes:

1. From the Main or Schematic window, choose **DesignGuide > Preferences**.
2. In the DesignGuide Menu Style group box, choose either **Use a selection dialog box** or **Use cascade menus**.



3. Close and restart the program for your preference changes to take effect.

Note
On PC systems, Windows resource issues might limit the use of cascading menus. When multiple windows are open, your system could become destabilized. Therefore, the dialog box menu style might be best for these situations.

The ADS Main window DesignGuide menu contains these choices:

- **DesignGuide Developer Studio > Start DesignGuide Studio** is only available on this menu if you have installed the DesignGuide Developer Studio to open the initial Developer Studio dialog box.

- **DesignGuide Developer Studio > Developer Studio Documentation** is only available on this menu if you have installed the DesignGuide Developer Studio to open the DesignGuide Developer Studio documentation.



Note

Another way to access the DesignGuide Developer Studio documentation is by selecting *Help > Topics and Index > DesignGuides > DesignGuide Developer Studio* from any ADS program window.

- **Add DesignGuide** opens a directory browser in which you can add a DesignGuide to your installation. This is primarily intended for use with DesignGuides that are custom-built through the Developer Studio.
- **List/Remove DesignGuide** opens a list of your installed DesignGuides. Select any that you would like to uninstall and choose the *Remove* button.

Preferences opens a dialog box that enables you to:

- Disable the DesignGuide menu commands (all except Preferences) in the Main window by unchecking this box. In the Schematic and Layout windows, the complete DesignGuide menu and all of its commands are removed if this box is unchecked.
- Select your preferred interface method, either cascading menus or dialog boxes.

Opening a Workspace

The ADS design environment is set up within a workspace.

To create a new workspace:

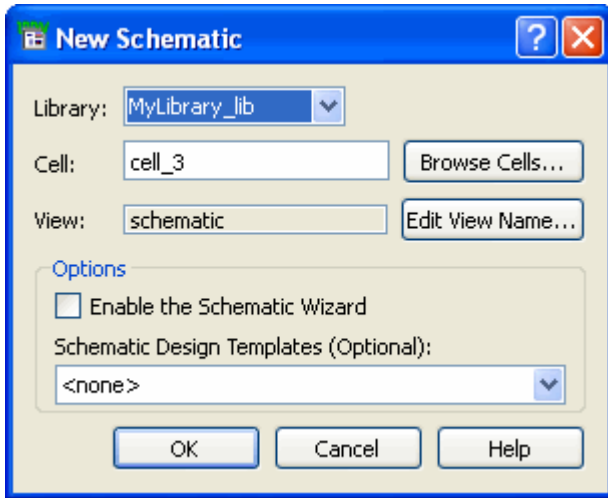
1. From the ADS Main window, choose **File > New > Workspace** or click **Create a New Workspace** on the toolbar.
2. In the dialog, define the location of the workspace and assign a workspace name.

Opening a Schematic Window

A new schematic design is needed to contain the lowpass component for this example.

To open a Schematic window:

1. From the ADS Main window, click **Window > New Schematic** or click **New Schematic Window** on the toolbar. A New Schematic window appears.



2. Select library from the **Library** drop-down box.
3. Enter cell name in the **Cell** field or Click **Browse cells** to browse and select the existing cells.
4. Click **OK** to open the new schematic window.

**Note**

Depending on how your ADS preferences are set, a Schematic window appears automatically when you create or open a workspace.

Opening the Impedance Matching Utility

The Impedance Matching Utility is accessed from the Tools menu or the DesignGuide menu in the Schematic window.

To open the Impedance Matching Utility window, you can select one of the following options:

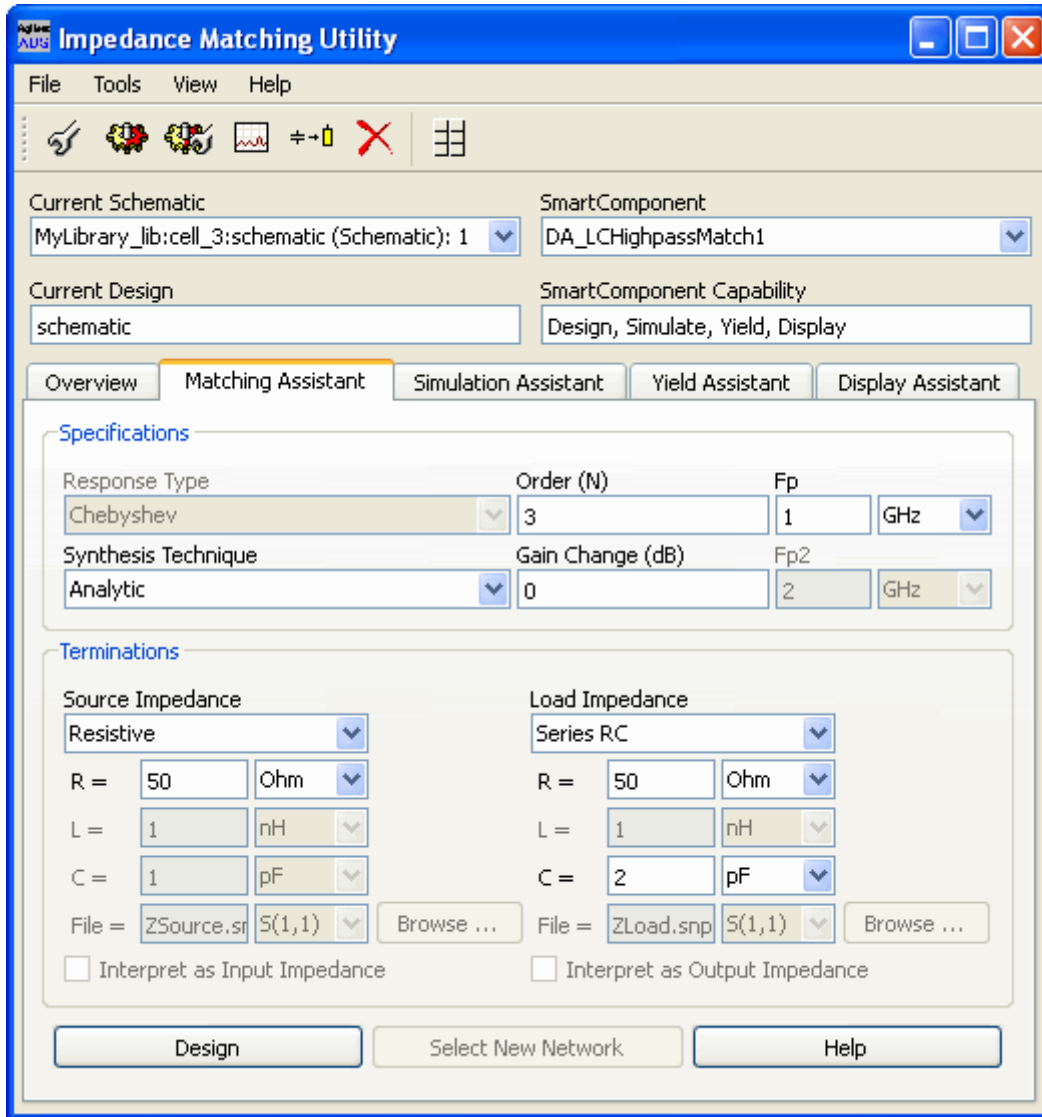
- **DesignGuide > Amplifier > Tools > Matching Utility**
- **DesignGuide > Filter > Impedance Matching**
- **DesignGuide > Mixers > Tools > Matching Utility**
- **DesignGuide > Oscillator > Tools > Impedance Matching**

Using the Impedance Matching Utility Window

All Utility features are available in the Impedance Matching Utility window that includes menus, a toolbar, and SmartComponent manipulation controls. The menus and toolbar performs the basic functions of design, delete, and display the SmartComponent palette. Each tab within the window includes a specific Utility feature. Click on the tab to explore and understand the utility features. Explore the window menus as well to familiarize yourself with the basic Utility capabilities.

The drop-down lists at the top of the utility window are designed to help you navigate

multiple schematic windows and SmartComponents. The **Current Schematic** drop-down list box is used to select any of the currently opened schematic windows. This field is updated any time *Impedance Matching Utility* Window is selected from the Tools menu. From the **SmartComponent** drop-down list box, you can select any of the SmartComponents on the currently selected schematic window.



To close the Utility window:

- Select **File > Exit Utility** from the utility window menubar. Continue the step-by-step example by [Designing and Analyzing a Network](#).

Designing and Analyzing a Network

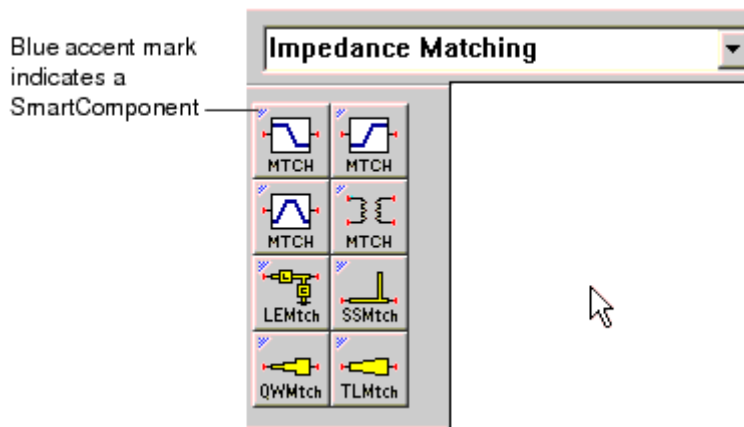
In this step-by-step example, you design and analyze a bandpass matching network. A bandpass matching network can be designed easily by using the default component parameter settings. Using the Utility follows a normal design flow procedure:

- Select a component needed for your design from the component palette ([Displaying the SmartComponent Palette](#)) and placing the component in your design ([Placing Example Component in the Design](#)).
- Provide specifications ([Changing SmartComponent Parameters](#)).
- Design and analyze the component ([Designing the Matching Component](#)) and [Analyzing Yield of the Matching Network](#)).

Note
Before starting this section of the step-by-step example, confirm your setup ([Setting Up the Design Environment](#)).

Displaying the SmartComponent Palette

The program contains a SmartComponent palette, *Impedance Matching Networks*, that provides quick and easy access to the SmartComponents. A blue accent in the upper-left corner of a palette button indicates the component is a SmartComponent.



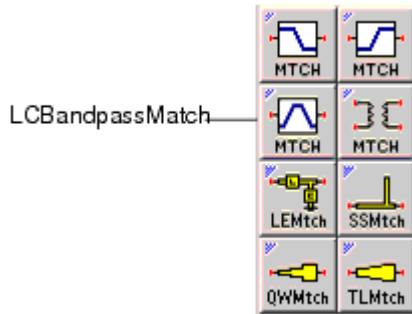
You can display the SmartComponent palettes in one of these ways:

- Click *Component Palette* on the Utility window toolbar
- Choose *View > Component Palette* from the Utility window menu
- Select the *Impedance Matching* palette from the Component Palette drop-down list box in the Schematic window toolbar (directly above the palette). Continue the example by selecting the Impedance Matching palette. The palette displays in the Schematic window.

Placing Example Component in the Schematic Window

To place the SmartComponent in the Schematic window:

1. Click **LCBandpassMatch** on the component palette to select the component.



2. Click within the schematic window to place the component.
 - You can change the orientation of the SmartComponent *before* placement by selecting from the *Insert > Component > Component Orientation* commands or by selecting *Rotate by -90* repeatedly from the schematic toolbar.
 - The place component mode remains active until you choose End Command from the schematic toolbar.

Note

When a SmartComponent is placed initially, a temporary component is used to place and specify the parameters for the SmartComponent. This component *does not* contain a subnetwork design. After the utility has been used to design the SmartComponent, the temporary component is replaced with a permanent component. The SmartComponent is renamed to *DA_ComponentName_DesignName* and an autogenerated design is placed inside the SmartComponent's subnetwork design file. Subsequently, if the SmartComponent parameters are edited, the utility must be used again to update the subnetwork design file.

Changing SmartComponent Parameters

Parameters can be changed directly from the Control window.

To edit the LCBandpassMatch component parameters:

1. In the Control window, select the **LCBandpassMatch** component from the SmartComponent drop-down list. This ensures all changes are referenced to this component.
2. Select the **Matching Assistant** tab. Leave all parameters at default.

Note

See *Placing and Editing SmartComponents* (dgfilter) for details on changing parameters in the design window or component dialog box.

Designing the Matching Component

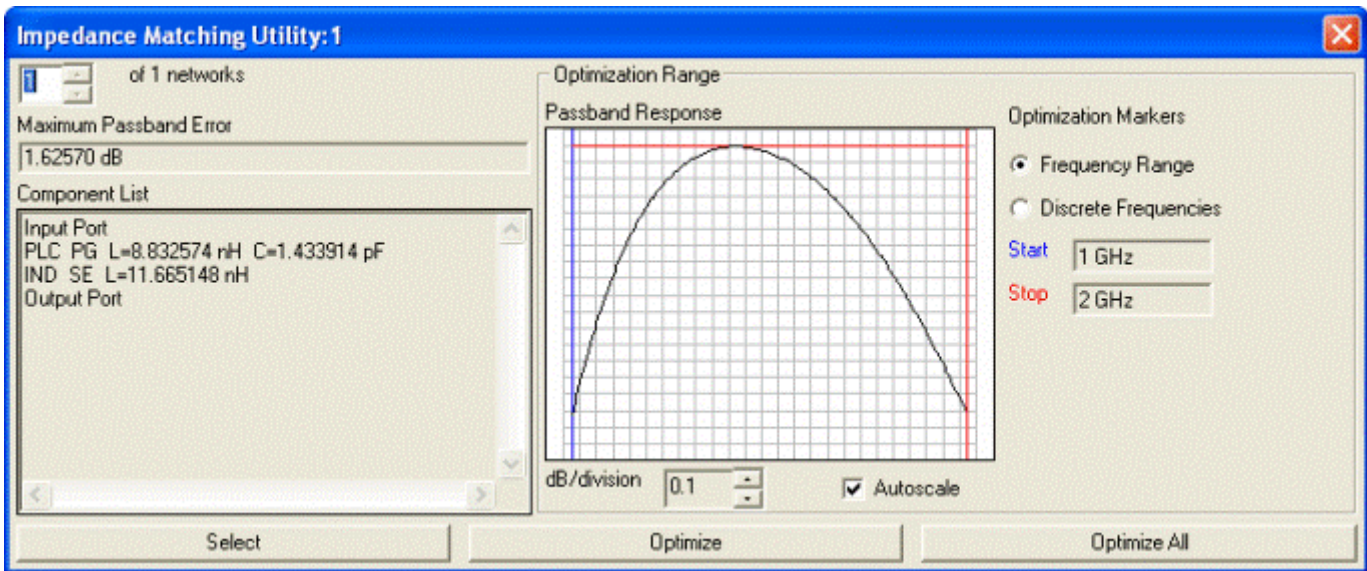
You can design and analyze the SmartComponent from the Control Window.

To start the simulation:

1. On the Matching Assistant tab, click **Design** to start a simulation and generate the

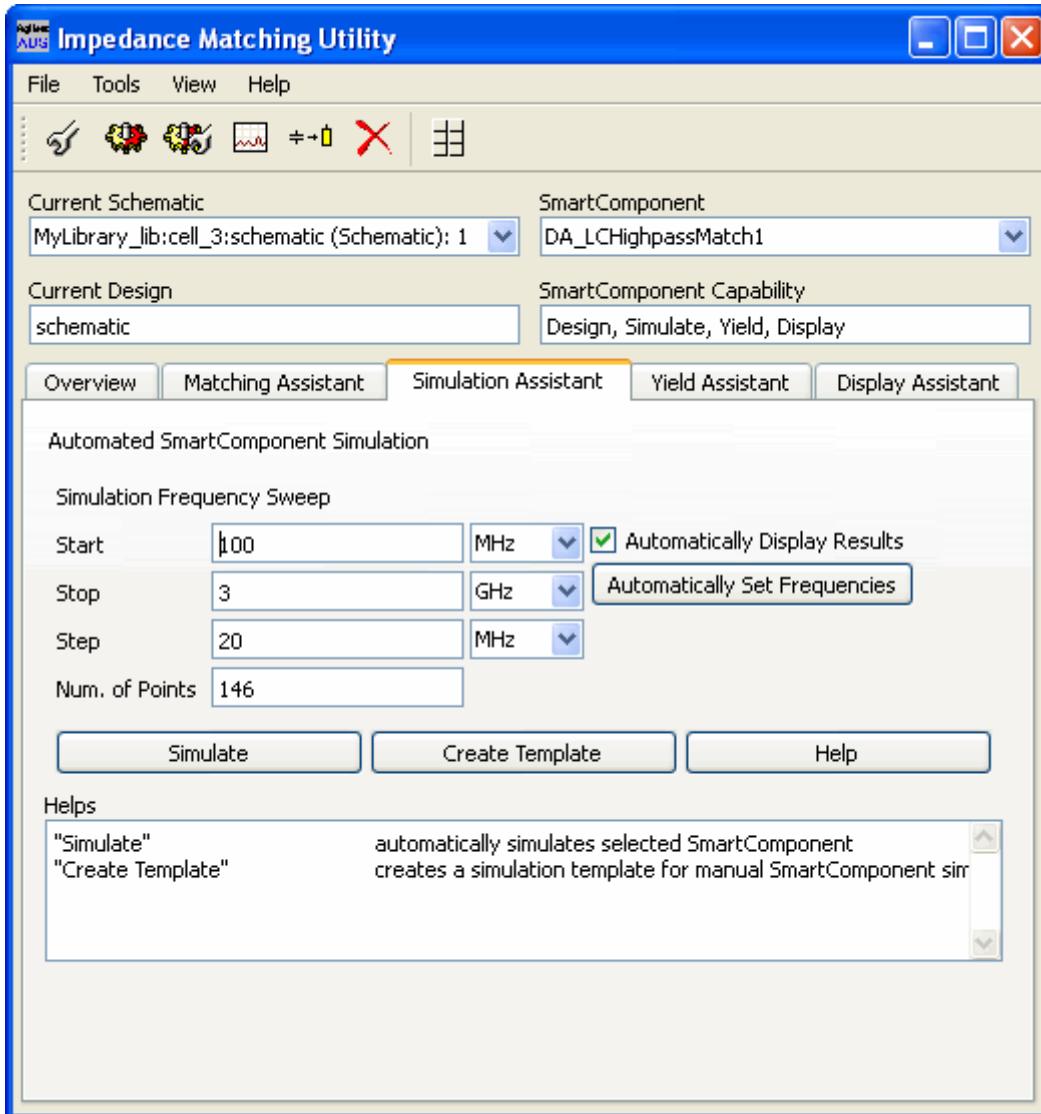
design for the SmartComponent. When the simulation has finished, a Impedance Matching Utility dialog box appears.

2. Click **Select** to complete the process.

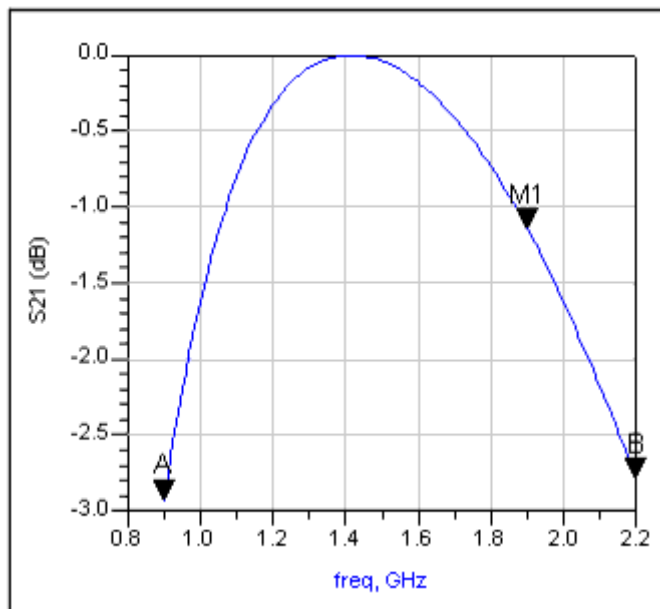


To analyze (simulate) the network:

1. Select the **Simulation Assistant** tab on the Impedance Matching Utility window.



- Click **Automatically Set Frequencies** followed by **Simulate** to start the Simulation Assistant and analyze the SmartComponent. Part of the analysis results are shown below.



Closing the Matching Component Results Window

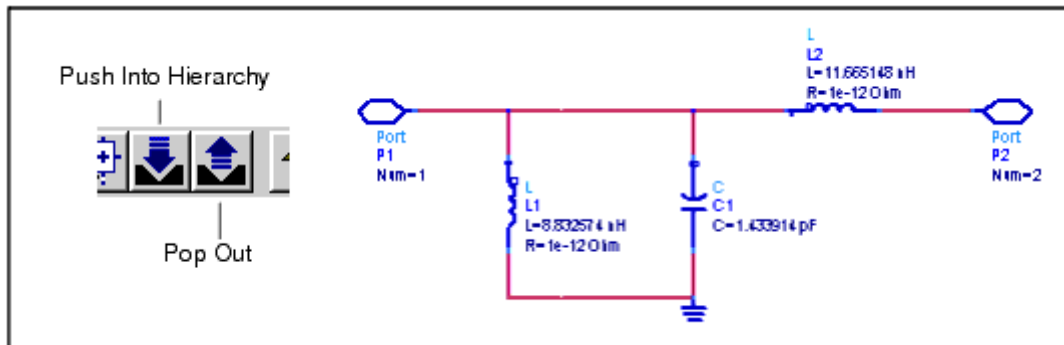
- To close the display window, choose **File > Close Window** from the menu.

Examining the Matching Component Design

You can look at the details of the autogenerated design inside the SmartComponent's subnetwork.

To examine the component's subnetwork:

1. Select the component **LCBandpassMatch**.
2. Click **Push Into Hierarchy** on the schematic toolbar.
3. After examining the design, click **Pop Out** on the schematic toolbar to close the view.

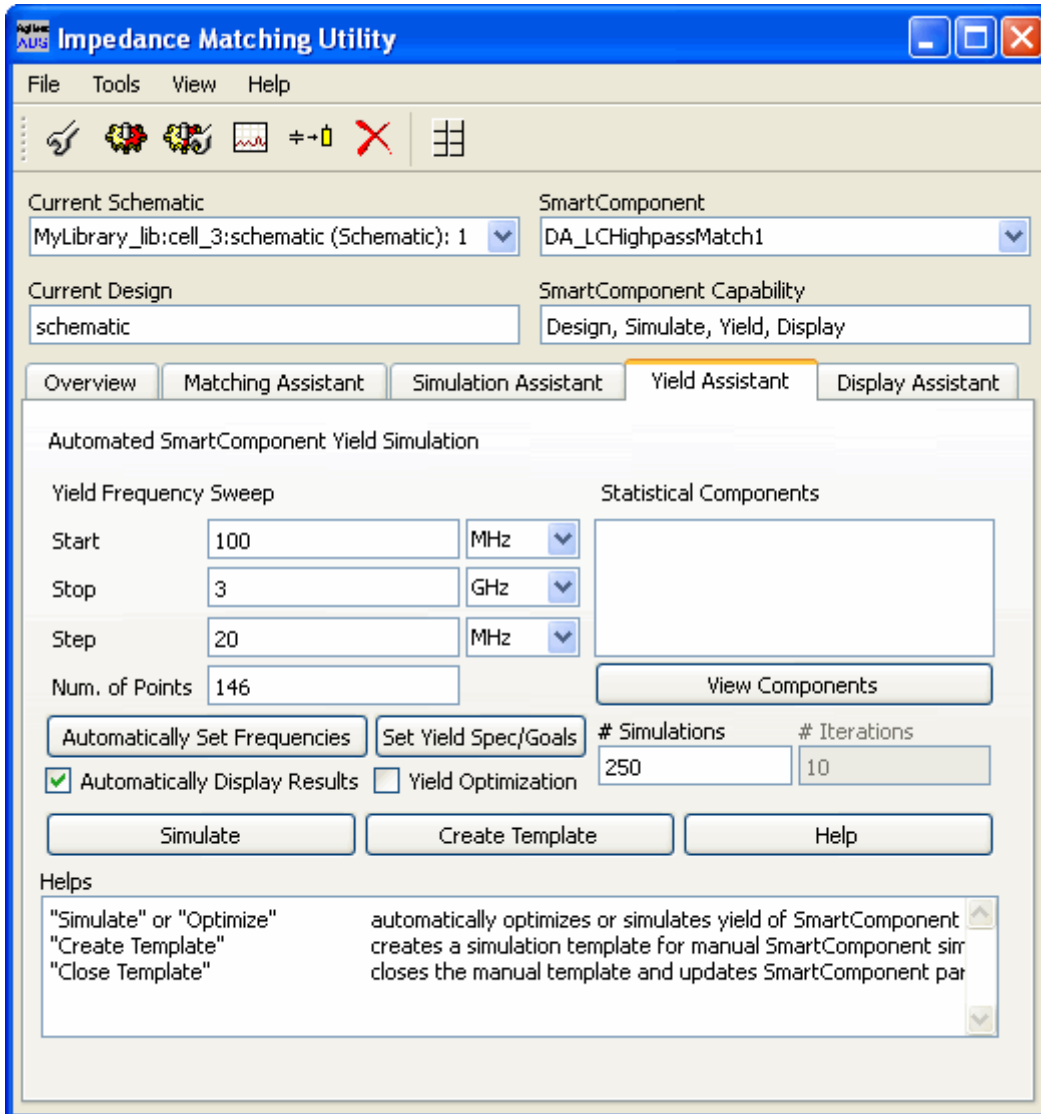


Analyzing Yield of the Matching Network

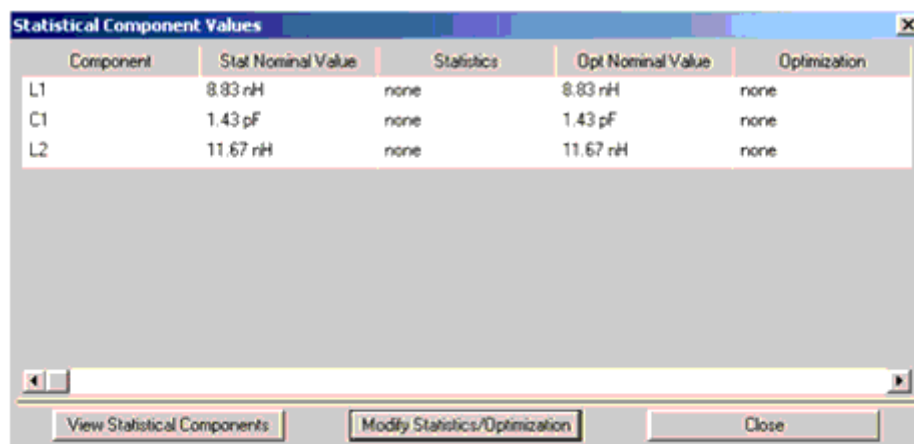
After the design process, the component sensitivities of the matching network can be checked using the **Yield Assistant**.

To find components to analyze:

1. Click the **Yield Assistant** tab on the Impedance Matching Utility window.



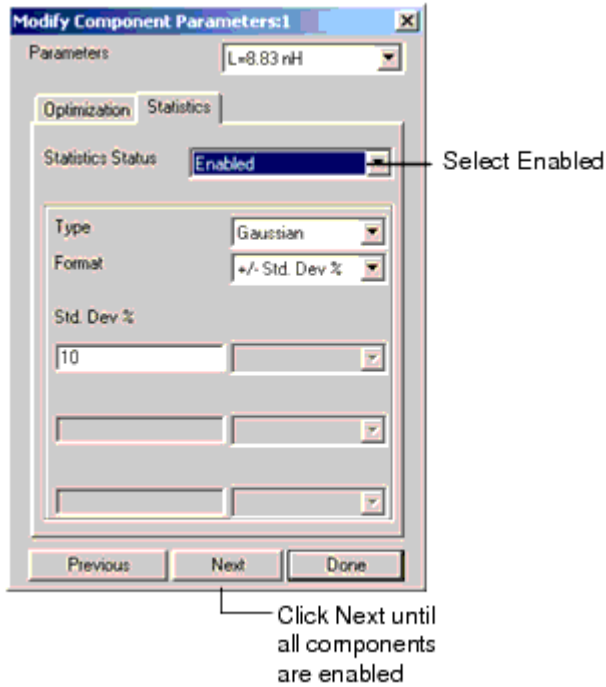
2. Click **View Components > Modify Statistics/Optimization** . The matching network displays in the schematic along with a dialog box.



Select Modify Statistics/Optimization

To choose components:

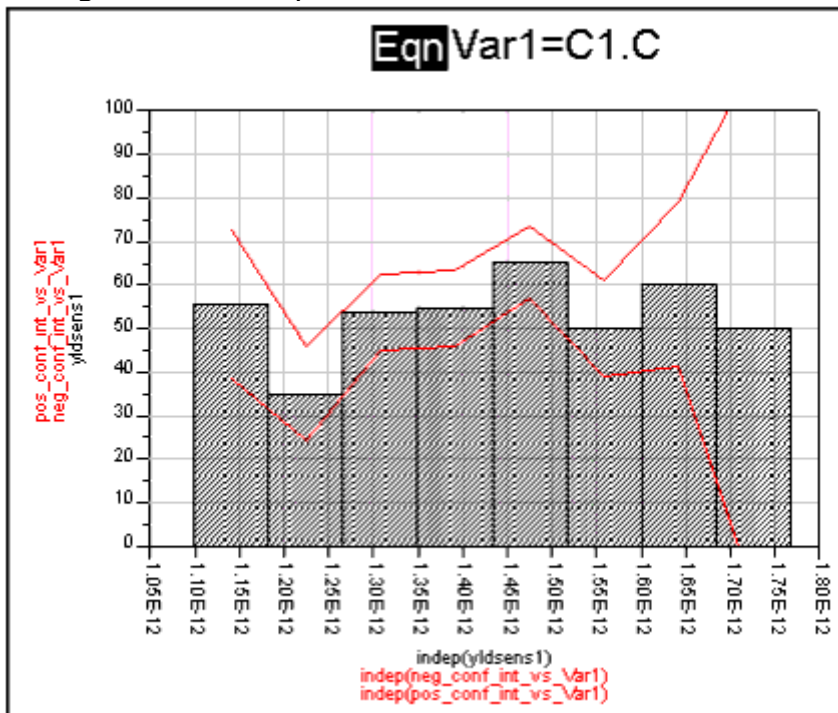
1. Choose **Enabled** from the **Statistics Status** drop-down menu.



2. Select **Next** to move on to the next component. Repeat this until all 3 components in the network are enabled, and then click **Done** .
3. Click **Close** in the Statistical Component Values dialog box.

To analyze yield sensitivity of the network:

1. In the **Yield Assistant** tab, select **Automatically Set Frequencies** .
2. Select by **Simulate** to start the Yield Assistant and analyze the yield sensitivity to the selected component values. The results display automatically. The sensitivity histogram for component C1 is shown here.



3. To close the display window, choose **File** > **Close** from the menu.

Deleting the Matching SmartComponent

- To delete the LCBandpassMatch SmartComponent, choose **Tools > Delete SmartComponent** from the Control window.



Note

The *Delete* button on the Control window is different from the *Delete* button on the ADS schematic window toolbar.

This completes the step-by-step example.

SmartComponent Reference for Impedance Matching Utility

This section contains detailed information for each Impedance Matching Utility SmartComponents.

LCLowpassMatch (Lowpass Match) (impmatchutil)

LCHighpassMatch (Highpass Match) (impmatchutil)

LCBandpassMatch (Bandpass Match) (impmatchutil)

LCBandpassTransformer (Bandpass Transformer) (impmatchutil)

SingleStubMatch (Single-Stub Match) (impmatchutil)

QuarterWaveMatch (Quarter Wave Match) (impmatchutil)

TaperedLineMatch (Tapered Line Match) (impmatchutil)

LCEllMatch (Two-Element Ell Narrowband Match) (impmatchutil)

LCBandpassMatch (Bandpass Match)

Symbol



Summary

A bandpass matching network provides a bandpass frequency response between the input (pin 1) and output (pin 2) ports. The source or load terminations can be specified using either a lumped component approximation, a frequency independent complex impedance, or a Touchstone format S-parameter file. Analytic and Real Frequency synthesis methods are both possible. The number of reactive components (N) is approximate due to potential component absorption.

Parameters

| Name | Description | Unit | Default |
|-----------------|---|-------------|------------------|
| Fp1 | Frequency at lower passband edge | GHz | 1 |
| Fp2 | Frequency at upper passband edge | GHz | 2 |
| SynthesisType | Synthesis procedure, <i>Analytic or Real Frequency</i> (impmatchutil) | None | Analytic |
| GainChange | Linear gain change over passband (can be negative) | dB | 0 |
| N | Network order | None | 3 |
| SourceType | Type of source impedance | None | Resistive |
| Rg | Source resistance | Ohms | 50 |
| Lg | Source inductance | nH | 1 |
| Cg | Source capacitance | pF | 1 |
| Zg | Source impedance | Ohms | 50+j×50 |
| SourceFile | Source S-parameter file name | None | ZSource.s1p |
| SourceFileSparm | Source S-parameter | None | "S(1,1)" |
| SourceImpType | Complex source impedance interpretation | None | Source Impedance |
| LoadType | Type of load impedance | None | Series RLC |
| RL | Load resistance | Ohms | 50 |
| LL | Load inductance | nH | 1 |
| CL | Load capacitance | pF | 1 |
| ZL | Load impedance | Ohms | 100-j*100 |
| LoadFile | Load S-parameter file name | None | ZLoad.s1p |
| LoadFileSparm | Load S-parameter | None | "S(1,1)" |
| LoadImpType | Complex load impedance interpretation | None | Load Impedance |

Palette

Filter DG - All Networks

Available Automated-Assistants

Matching Assistant, Simulation Assistant, Yield Assistant, Display Assistant

Matching Assistant Usage

For general information, refer to *Matching Assistant* (dgfilter). Network order results in approximately $2 \times N$ elements, although this varies due to component absorption as well as required network transformations.

Simulation Assistant Usage

For general information, refer to *Simulation Assistant* (dgfilter).

Yield Assistant Usage

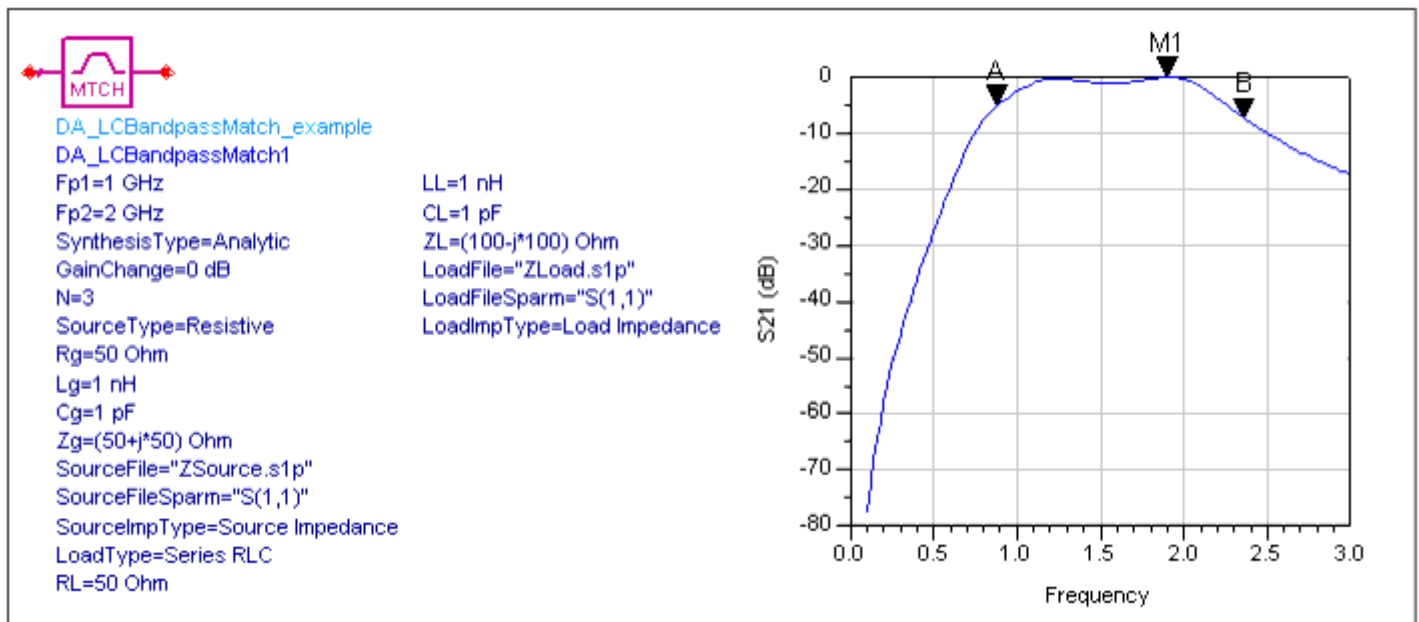
For general information, refer to *Yield Assistant* (dgfilter).

Display Assistant Usage

For general information, refer to *Display Assistant* (dgfilter).

Example

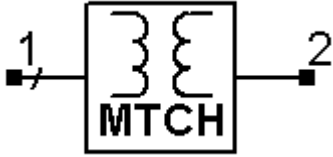
A bandpass matching network (N=2) was designed for a passband between 1 GHz and 2 GHz with a complex source termination ($Z_g = 20 + j \times 50$ Ohms) and a Series RLC load termination (RL=50 Ohms, LL=1 nH, CL=1 pF). 20 choices are offered for the network. Choosing the first network results in a match realized using five reactive components. See [Bandpass Matching Network](#).



Bandpass Matching Network

LCBandpassTransformer (Bandpass Transformer)

Symbol



Summary

A bandpass transformer provides a bandpass (pseudo-lowpass) frequency response between the input (pin 1) and output (pin 2) ports. The source or load terminations must be real and unequal.

Parameters

| Name | Description | Unit | Default |
|--------------|----------------------------------|------|----------------|
| Fp1 | Frequency at left passband edge | GHz | 1 |
| Fp2 | Frequency at right passband edge | GHz | 2 |
| N | Network order | None | 3 |
| ResponseType | Type of frequency response | None | Maximally Flat |
| Rg | Source resistance | Ohms | 50 |
| RL | Load resistance | Ohms | 25 |

Palette

Filter DG - All Networks

Available Automated-Assistants

Matching Assistant, Simulation Assistant, Yield Assistant, Display Assistant

Matching Assistant Usage

For general information, refer to *Matching Assistant* (dgfilter). The terminations must be unequal or no network is synthesized. For equal terminations, use a doubly-terminated filter topology. Network order results in $2 \times N$ components.

Simulation Assistant Usage

Simulation Assistant Usage

For general information, refer to *Simulation Assistant* (dgfilter).

Yield Assistant Usage

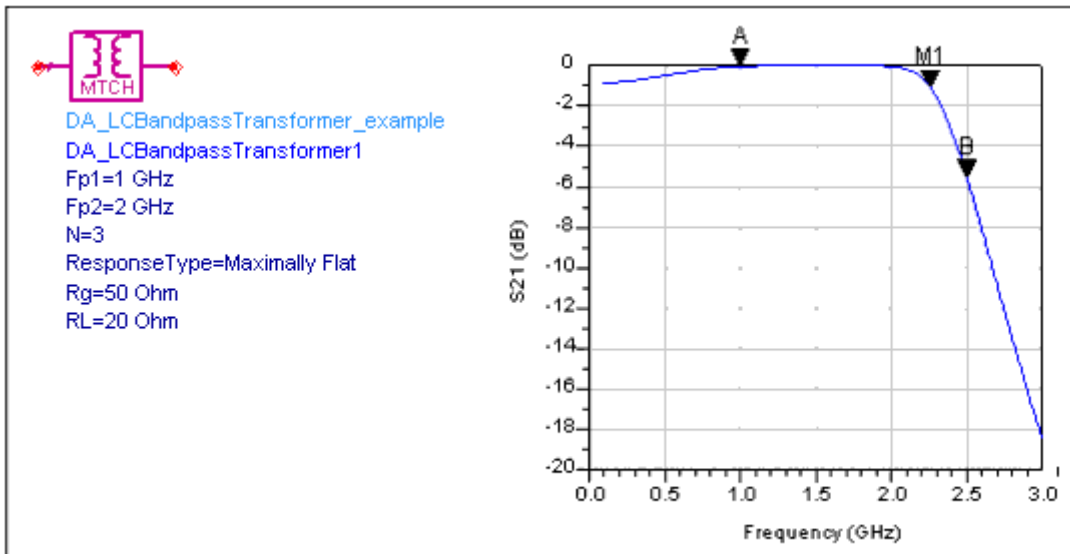
For general information, refer to *Yield Assistant* (dgfilter).

Display Assistant Usage

For general information, refer to *Display Assistant* (dgfilter).

Example

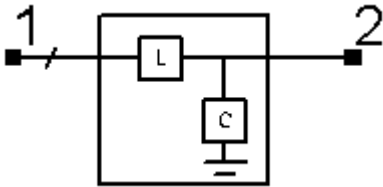
A bandpass transformer ($N=3$) was designed for a passband between 1 GHz and 2 GHz with a source resistance of $R_g=50$ Ohms and a load resistance of $R_l=20$ Ohms. See [Bandpass Transformer](#).



Bandpass Transformer

LCElMatch (Two-Element "EII" Narrowband Match)

Symbol



Summary

An ELL matching network provides a narrowband bandpass frequency response between the input (pin 1) and output (pin 2) ports. The source or load terminations can be specified using either a lumped component approximation, a frequency independent complex impedance, or a Touchstone format S-parameter file.

Parameters

| Name | Description | Unit | Default |
|-----------------|---|------|------------------|
| F | Frequency at center | GHz | 1 |
| SourceType | Type of source impedance | None | Resistive |
| Rg | Source resistance | Ohms | 50 |
| Lg | Source inductance | nH | 1 |
| Cg | Source capacitance | pF | 1 |
| Zg | Source impedance | Ohms | 50+j×50 |
| SourceFile | Source S-parameter file name | None | ZSource.s1p |
| SourceFileSparm | Source S-parameter | None | "S(1,1)" |
| SourceImpType | Complex source impedance interpretation | None | Source Impedance |
| LoadType | Type of load impedance | None | Series RL |
| RL | Load resistance | Ohms | 100 |
| LL | Load inductance | nH | 1 |
| CL | Load capacitance | pF | 1 |
| ZL | Load impedance | Ohms | 100-j*100 |
| LoadFile | Load S-parameter file name | None | ZLoad.s1p |
| LoadFileSparm | Load S-parameter | None | "S(1,1)" |
| LoadImpType | Complex load impedance interpretation | None | Load Impedance |

Palette

Impedance Matching

Available Automated-Assistants

Matching Assistant, Simulation Assistant, Yield Assistant, Display Assistant, Transformation Assistant

Matching Assistant Usage

For general information, refer to *Matching Assistant* (dgfilter).

Simulation Assistant Usage

For general information, refer to *Simulation Assistant* (dgfilter).

Yield Assistant Usage

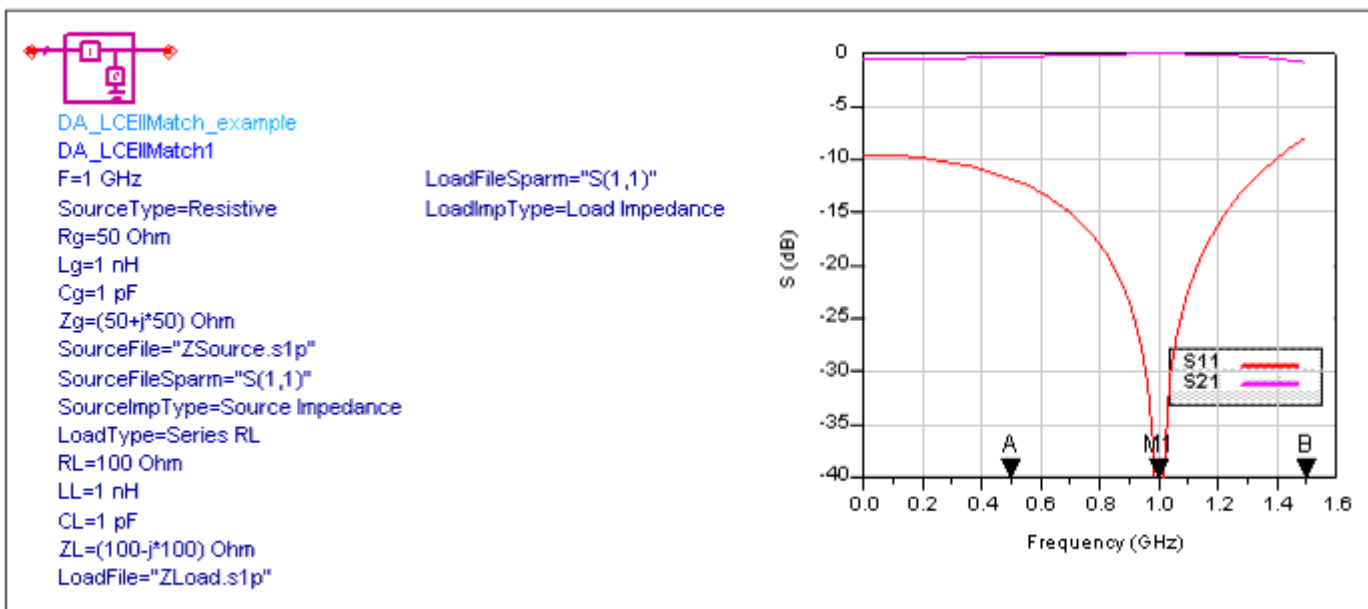
For general information, refer to *Yield Assistant* (dgfilter).

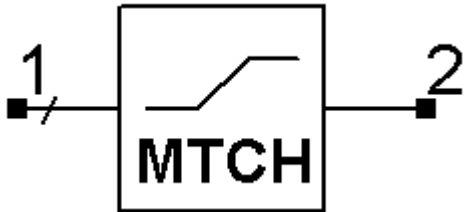
Display Assistant Usage

For general information, refer to *Display Assistant* (dgfilter).

Example

An Ell matching network was designed for a center frequency of 1 GHz with a 50 Ohm source resistance and a Series RLC load termination (RL=50 Ohms, LL=1 nH, C =1 pF).



EI Matching Network**LCHighpassMatch (Highpass Match)****Symbol****Summary**

A highpass matching network provides a highpass frequency response between the input (pin 1) and output (pin 2) ports. The source or load terminations can be specified using either a lumped component approximation, a frequency independent complex impedance, or a Touchstone format S-parameter file. Analytic and Real Frequency synthesis methods are both possible. The network order (N) is approximate due to potential component absorption.

Parameters

| Name | Description | Unit | Default |
|-----------------|---|------|------------------|
| Fp | Frequency at passband edge | GHz | 1 |
| SynthesisType | Synthesis procedure, <i>Analytic or Real Frequency</i> (impmatchutil) | None | Analytic |
| GainChange | Linear gain change over passband (can be negative) | dB | 0 |
| N | Network order | None | 3 |
| SourceType | Type of source impedance | None | Resistive |
| Rg | Source resistance | Ohms | 50 |
| Lg | Source inductance | nH | 1 |
| Cg | Source capacitance | pF | 1 |
| Zg | Source impedance | Ohms | 50+j×50 |
| SourceFile | Source S-parameter file name | None | ZSource.s1p |
| SourceFileSparm | Source S-parameter | None | "S(1,1)" |
| SourceImpType | Complex source impedance interpretation | None | Source Impedance |
| LoadType | Type of load impedance | None | Series RC |
| RL | Load resistance | Ohms | 50 |
| LL | Load inductance | nH | 1 |
| CL | Load capacitance | pF | 2 |
| ZL | Load impedance | Ohms | 100-j*100 |
| LoadFile | Load S-parameter file name | None | ZLoad.s1p |
| LoadFileSparm | Load S-parameter | None | "S(1,1)" |
| LoadImpType | Load impedance | None | Load Impedance |

Palette

Filter DG - All Networks

Available Automated-Assistants

Matching Assistant, Simulation Assistant, Yield Assistant, Display Assistant

Matching Assistant Usage

For general information, refer to *Matching Assistant* (dgfilter). When representing the source and/or load using lumped components, only lowpass type networks are allowed. Arbitrary terminations can be implemented using S-parameter files. However, if the specified termination impedance is not of lowpass form, the resulting matching network response approximates a lowpass form but typically rolls off at the low end of the band.

Simulation Assistant Usage

For general information, refer to *Simulation Assistant* (dgfilter).

Yield Assistant Usage

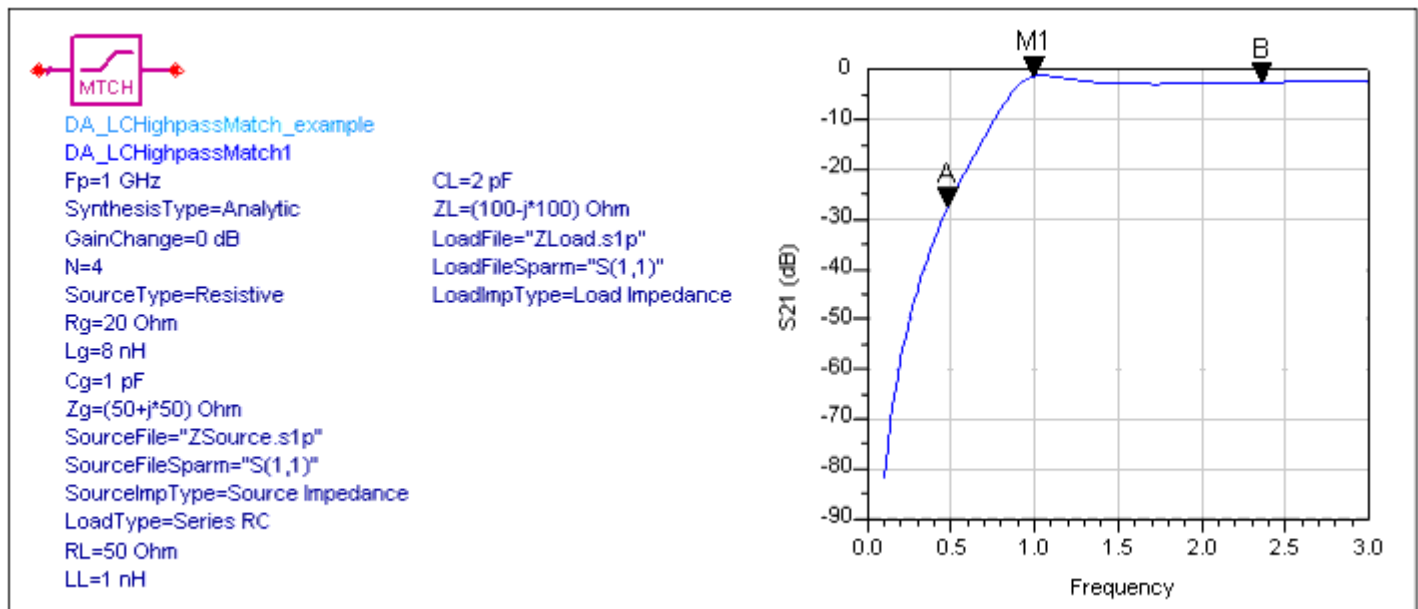
For general information, refer to *Yield Assistant* (dgfilter).

Display Assistant Usage

For general information, refer to *Display Assistant* (dgfilter).

Example

A highpass matching network (N=4) was designed for 1 GHz with a Parallel RL source termination ($R_g=20$ Ohms, $L_g=8$ nH) and a Series RC load termination ($R_L=50$ Ohms, $C_L=1$ pF). The match is realized using three reactive components, since the load capacitance is absorbed by the designed network.



Highpass Matching Network

LC Lowpass Match (Lowpass Match)

Symbol



Summary

A lowpass matching network provides a lowpass frequency response between the input (pin 1) and output (pin 2) ports. The source or load terminations can be specified using either a lumped component approximation, a frequency independent complex impedance, or a Touchstone format S-parameter file. Analytic and Real Frequency synthesis methods are both possible. The network order (N) is approximate due to potential component absorption.

Parameters

| Name | Description | Unit | Default |
|-----------------|---|------|------------------|
| Fp | Frequency at passband edge | GHz | 1 |
| SynthesisType | Synthesis procedure, <i>Analytic or Real Frequency</i> (impmatchutil) | None | Analytic |
| GainChange | Linear gain change over passband (can be negative) | dB | 0 |
| N | Network order | None | 3 |
| SourceType | Type of source impedance | None | Resistive |
| Rg | Source resistance | Ohms | 50 |
| Lg | Source inductance | nH | 1 |
| Cg | Source capacitance | pF | 1 |
| Zg | Source impedance | Ohms | 50+j×50 |
| SourceFile | Source S-parameter file name | None | ZSource.s1p |
| SourceFileSparm | Source S-parameter | None | "S(1,1)" |
| SourceImpType | Complex source impedance interpretation | None | Source Impedance |
| LoadType | Type of load impedance | None | Series RL |
| RL | Load resistance | Ohms | 50 |
| LL | Load inductance | nH | 1 |
| CL | Load capacitance | pF | 1 |
| ZL | Load impedance | Ohms | 100-j*100 |
| LoadFile | Load S-parameter file name | None | ZLoad.s1p |
| LoadFileSparm | Load S-parameter | None | "S(1,1)" |
| LoadImpType | Complex load impedance interpretation | None | Load Impedance |

Palette

Filter DG - All Networks

Available Automated-Assistants

Matching Assistant, Simulation Assistant, Yield Assistant, Display Assistant

Matching Assistant Usage

For general information, refer to *Matching Assistant* (dgfilter). When representing the source and/or load using lumped components only lowpass type networks are allowed. Arbitrary terminations can be implemented using S-parameter files. However, if the specified termination impedance is not of lowpass form, the resulting matching network response approximates a lowpass form but typically rolls off at the low end of the band.

Simulation Assistant Usage

For general information, refer to *Simulation Assistant* (dgfilter).

Yield Assistant Usage

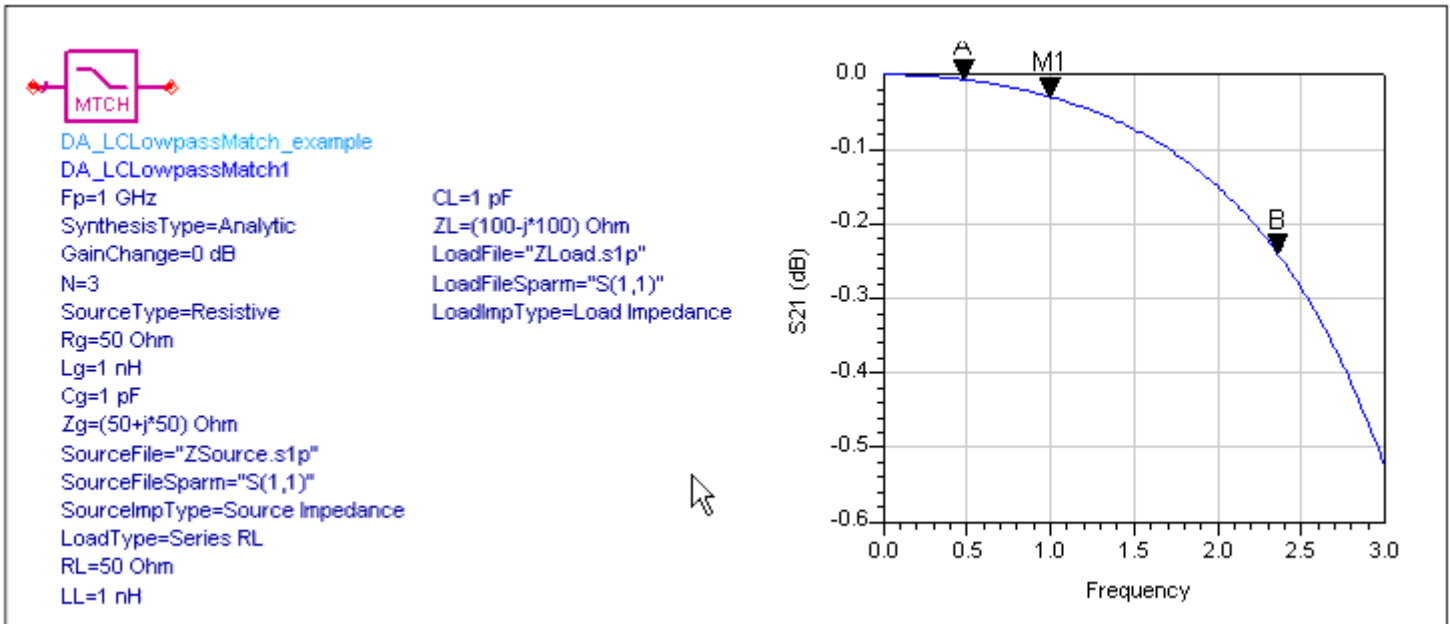
For general information, refer to *Yield Assistant* (dgfilter).

Display Assistant Usage

For general information, refer to *Display Assistant* (dgfilter).

Example

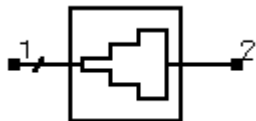
A lowpass matching network (N=3) was designed for 1 GHz with a resistive source termination ($R_g=50$ Ohms) and a Series RL load termination ($R_L=50$ Ohms, $L_L=1$ nH). The match is realized using two reactive components, since the load inductance is absorbed by the designed network.



Lowpass Matching Network

QuarterWaveMatch (Quarter Wave Match)

Symbol



Summary

A quarter wave transformer network provides a broadband bandpass frequency response between the input (pin 1) and output (pin 2) ports. The source or load terminations must be unequal resistances. The matching network consists of multiple quarter wavelength transmission line elements with carefully computed characteristic impedances to provide the specified frequency response.

Parameters

| Name | Description | Unit | Default |
|--------------|--|------|---------|
| Fp1 | Frequency at lower passband edge | GHz | 1 |
| Fp2 | Frequency at upper passband edge | GHz | 2 |
| Rg | Input impedance | Ohms | 50 |
| RL | Load impedance | Ohms | 100 |
| ResponseType | Type of frequency response | None | Uniform |
| N | Number of Quarter-Wave Sections (set N=0 to compute N) | None | 0 |
| Rmax | Maximum voltage reflection coefficient | dB | 20 |

Palette

Impedance Matching

Available Automated-Assistants

Matching Assistant, Simulation Assistant, Yield Assistant, Display Assistant, Transformation Assistant

Matching Assistant Usage

For general information, refer to *Matching Assistant* (dgfilter).

Simulation Assistant Usage

For general information, refer to *Simulation Assistant* (dgfilter).

Yield Assistant Usage

For general information, refer to *Yield Assistant* (dgfilter).

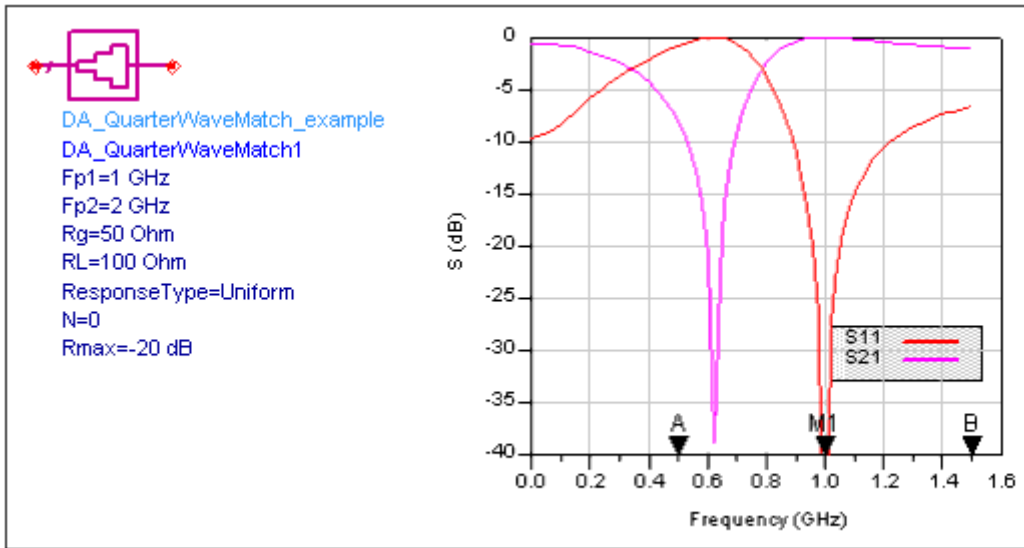
Display Assistant Usage

For general information, refer to *Display Assistant* (dgfilter).

Example

A quarter wave transformer was designed to match a 100 Ohm load impedance to a 50 ohm source impedance from 1GHz to 2 GHz. The maximum reflection coefficient was -20

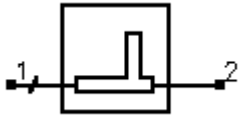
dB, with a uniform distribution of the section reflection coefficients. The design resulted in $N=3$ sections.



Quarter Wave Transformer

SingleStubMatch (Single-Stub Match)

Symbol



Summary

A single-stub matching network provides a narrowband bandpass frequency response between the input (pin 1) and output (pin 2) ports. The source or load terminations can be specified using either a lumped component approximation, a frequency independent complex impedance, or a Touchstone format S-parameter file.

Parameters

| Name | Description | Unit | Default |
|-----------------|--|------|------------------|
| F | Frequency at center | GHz | 1 |
| Zstub | Characteristic Impedance of stub line | Ohm | 50 |
| Zline | Characteristic Impedance of line between load and stub | Ohm | 50 |
| SourceType | Type of source impedance | None | Resistive |
| Rg | Source resistance | Ohms | 50 |
| Lg | Source inductance | nH | 1 |
| Cg | Source capacitance | pF | 1 |
| Zg | Source impedance | Ohms | 50+j×50 |
| SourceFile | Source S-parameter file name | None | ZSource.s1p |
| SourceFileSparm | Source S-parameter | None | "S(1,1)" |
| SourceImpType | Complex source impedance interpretation | None | Source Impedance |
| LoadType | Type of load impedance | None | Series RL |
| RL | Load resistance | Ohms | 100 |
| LL | Load inductance | nH | 1 |
| CL | Load capacitance | pF | 1 |
| ZL | Load impedance | Ohms | 100-j*100 |
| LoadFile | Load S-parameter file name | None | ZLoad.s1p |
| LoadFileSparm | Load S-parameter | None | "S(1,1)" |
| LoadImpType | Complex load impedance interpretation | None | Load Impedance |

Palette

Impedance Matching

Available Automated-Assistants

Matching Assistant, Simulation Assistant, Yield Assistant, Display Assistant, Transformation Assistant

Matching Assistant Usage

For general information, refer to *Matching Assistant* (dgfilter).

Simulation Assistant Usage

For general information, refer to *Simulation Assistant* (dgfilter).

Yield Assistant Usage

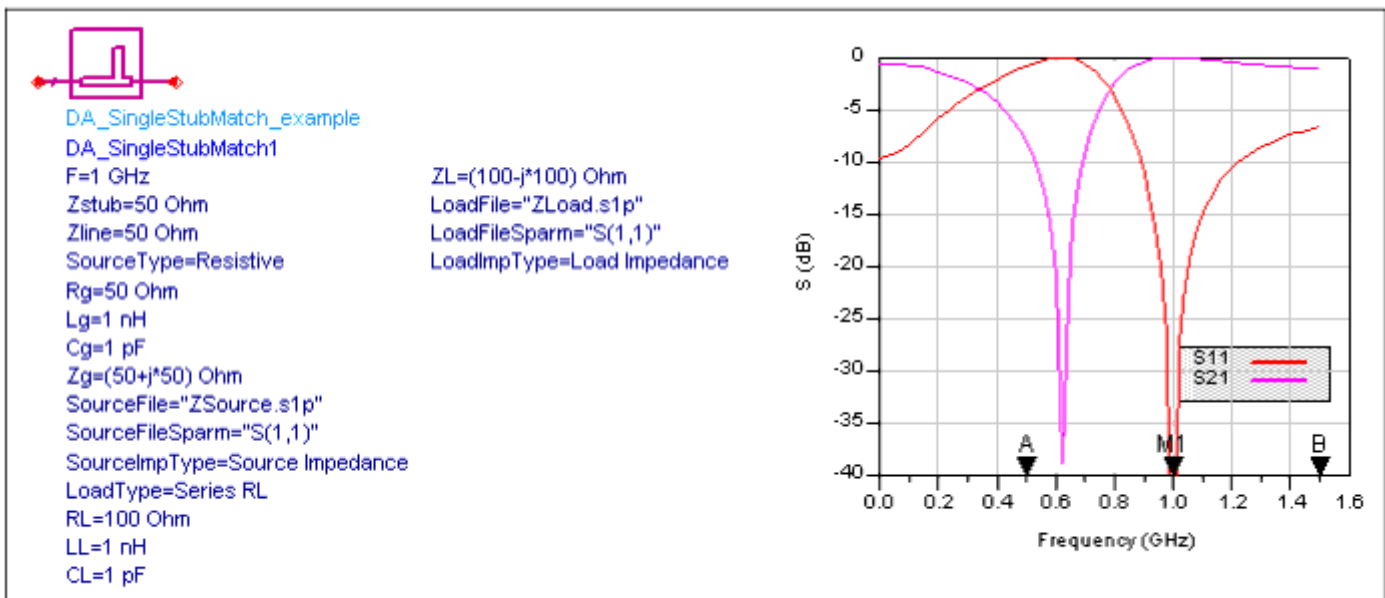
For general information, refer to *Yield Assistant* (dgfilter).

Display Assistant Usage

For general information, refer to *Display Assistant* (dgfilter).

Example

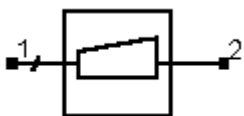
A single-stub matching network was designed to match a Series RL ($R=100$ Ohms, $L = 1$ nH) load impedance to a 50 ohm source impedance at a center frequency of 1 GHz. Choosing the configuration with an open-circuit stub yielded a design offering the results shown in the illustration below, Single-stub Matching Network.



Single-stub Matching Network

TaperedLineMatch (Tapered Line Match)

Symbol



Summary

A tapered line transformer network provides a broadband highpass frequency response between the input (pin 1) and output (pin 2) ports. The source or load terminations must be unequal resistances. The network consists of multiple transmission line sections to approximate a tapered line.

Parameters

| Name | Description | Unit | Default |
|--------------|---|------|-------------------|
| Fp | Frequency at lower passband edge (Response is Highpass) | GHz | 1 |
| Rg | Input impedance | Ohms | 50 |
| RL | Load impedance | Ohms | 100 |
| ResponseType | Type of frequency response | None | Exponential Taper |
| Rmax | Maximum voltage reflection coefficient | dB | -20 |
| N | Number of TLine Sections per wavelength | None | 0 |

Palette

Impedance Matching

Available Automated-Assistants

Matching Assistant, Simulation Assistant, Yield Assistant, Display Assistant, Transformation Assistant

Matching Assistant Usage

For general information, refer to *Matching Assistant* (dgfilter).

Simulation Assistant Usage

For general information, refer to *Simulation Assistant* (dgfilter).

Yield Assistant Usage

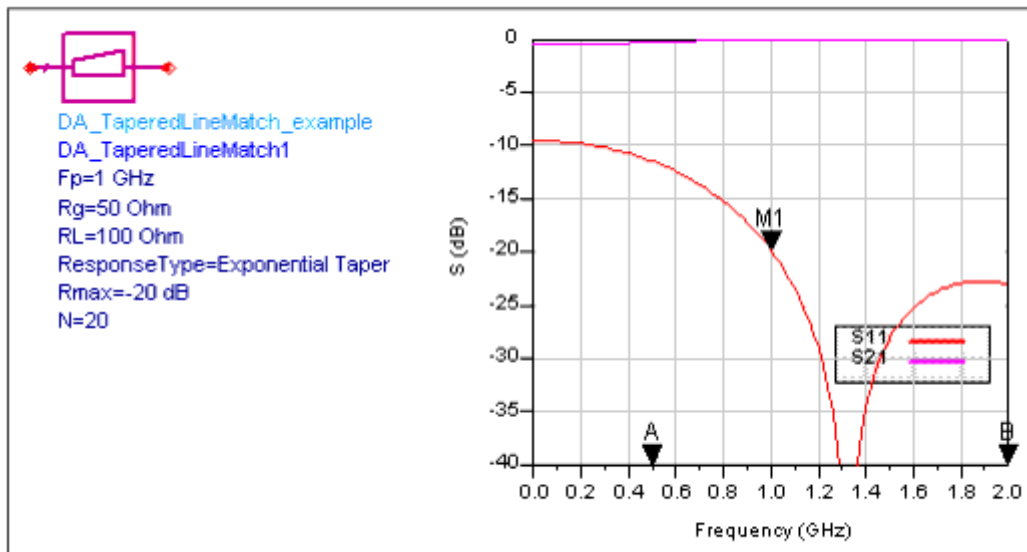
For general information, refer to *Yield Assistant* (dgfilter).

Display Assistant Usage

For general information, refer to *Display Assistant* (dgfilter).

Example

A tapered transformer was designed to match a 100 Ohm load impedance to a 50 ohm source impedance with a lower passband edge of 1GHz. The maximum reflection coefficient was -20 dB, with an exponential taper. The design used $N=20$ sections per wavelength.



Tapered Transformer

References

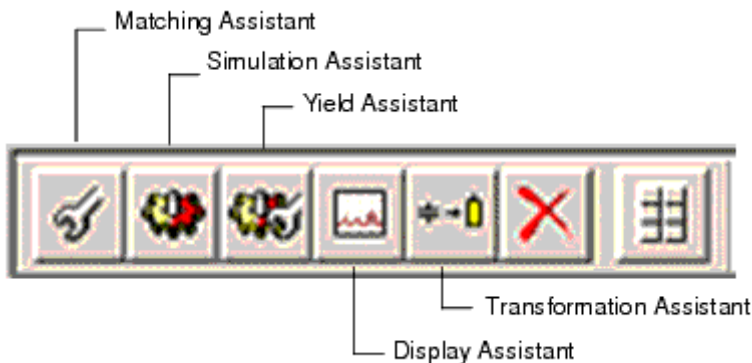
1. Thomas R. Cuthbert, Jr., *Circuit Design Using Personal Computers*, John Wiley & Sons, New York, 1983.
2. R. Levy, "Explicit formulas for Chebyshev impedance-matching networks," *Proc. IEEE*, pp. 1099-1106, June 1964.
3. R. M. Cottee and W. T. Joines, "Synthesis of lumped and distributed networks for impedance matching of complex loads," *IEEE Trans. Circuits Syst.*, pp. 316-329, May 1979.

Using Automated Assistants in Impedance Matching Utility

This section describes the Automated Assistants available in this Utility.

Automated Design and Analysis

The Automated Assistants provide quick design, simulation, yield analysis, and performance display for SmartComponents and enable transformation of lumped elements to transmission line elements. Five Automated Assistants are available in this Utility:



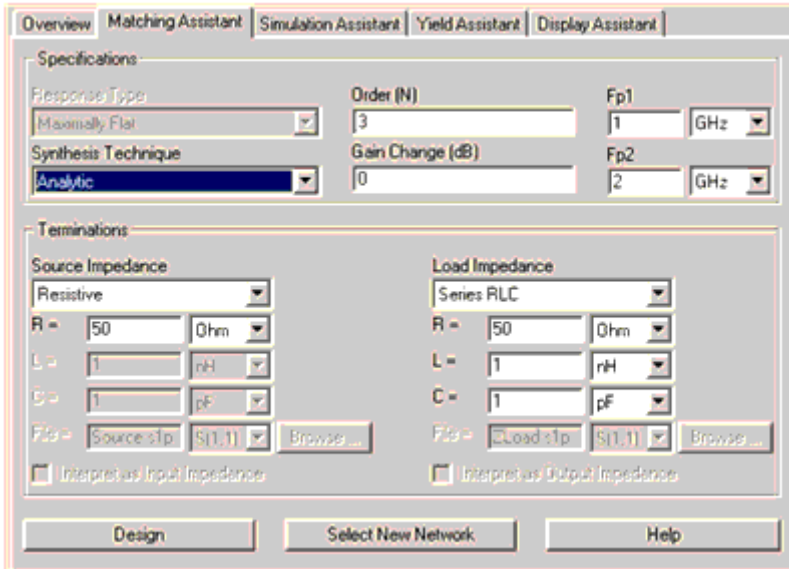
- *Matching Assistant* (dgfilter) is used to generate and update the design contained within a matching or transformer SmartComponent from the given specifications.
- *Simulation Assistant* (dgfilter) is used to analyze the design contained within a SmartComponent.
- *Yield Assistant* (dgfilter) is used to analyze the design sensitivities contained within a SmartComponent.
- *Display Assistant* (dgfilter) is used to easily and quickly display the performance of a SmartComponent.
- *Transformation Assistant* (dgfilter) is used to transform an ideal filter topology to a form that is realizable for high-frequency systems.

Explore each tab page by selecting the associated tab on the control window.

Matching Assistant

The Matching Assistant is used to generate and update the design contained within a matching or transformer SmartComponent from the given specifications. This tool is accessed using the Matching Utility window. From the utility window, full design control is

enabled from the Matching Assistant tab. Component design operations can also be accomplished using the utility window menu and toolbar. Any parameter change made from the Matching Assistant tab is reflected on the SmartComponent in the schematic.



To view a SmartComponent, select the SmartComponent from the *SmartComponent* drop-down list box in the upper right corner of the utility window. The SmartComponent parameters are shown inside the *Matching Assistant* tab.

Matching Assistant SmartComponents

The Matching Assistant SmartComponents include lumped and distributed element matching networks and transformers.

Matching Networks

Matching networks provide a match between two real or complex impedances over a given frequency range. The response can be lowpass, highpass, or bandpass if allowed by the specified impedance termination.

Transformers

Transformers provide a bandpass match between two unequal but real impedances using a special transform of a lowpass filter network.

Specifications

- **ResponseType** - frequency response type for transformer networks. Choices consist of *Maximally Flat* , *Chebyshev* , *Bessel-Thompson* , and *Gaussian* . This menu is used for transformers only.
- **Synthesis Technique** - Method used to synthesize the matching network - *Analytic* or *Real Frequency* . This menu is used for matching networks only.
- **Order** - The network order. This is approximately the number of reactive components for lowpass and highpass matching networks. For bandpass matching networks or transformers, the number of reactive components is approximately twice the order (exactly twice for transformers). For matching networks, absorption of source and load reactances as well as component transformations can change this number.
- **Gain Change** - Gain Change in dB over the band for matching networks. During synthesis, this parameter is ignored. However, if optimization is selected, this slope will be applied as part of the optimization goal. This parameter must be positive. The target gain will start at the left passband edge at $-(\text{Gain Change})$ and ramp linearly (in dB) to 0. This field is used for matching networks only.
- **Fp1, Fp2** - Lower and upper passband edge frequencies in Hertz. For lowpass and highpass networks, *Fp2* is not used and *Fp1* is changed to *Fp* to represent the passband edge frequency. Frequency values are changed by entering new values in the edit box. Units are changed by selecting a new unit identifier from the drop-down menu.
- **Line Impedance, Stub Impedance** - Characteristic impedance of transmission lines and stubs used in distributed element matching networks.
- **Max Reflection Coeff** - Maximum reflection coefficient in the passband for certain distributed element matching networks.
- **# Sections/Wavelength** - Number of transmission line segments per wavelength to use to approximate linear taper with transmission line elements.

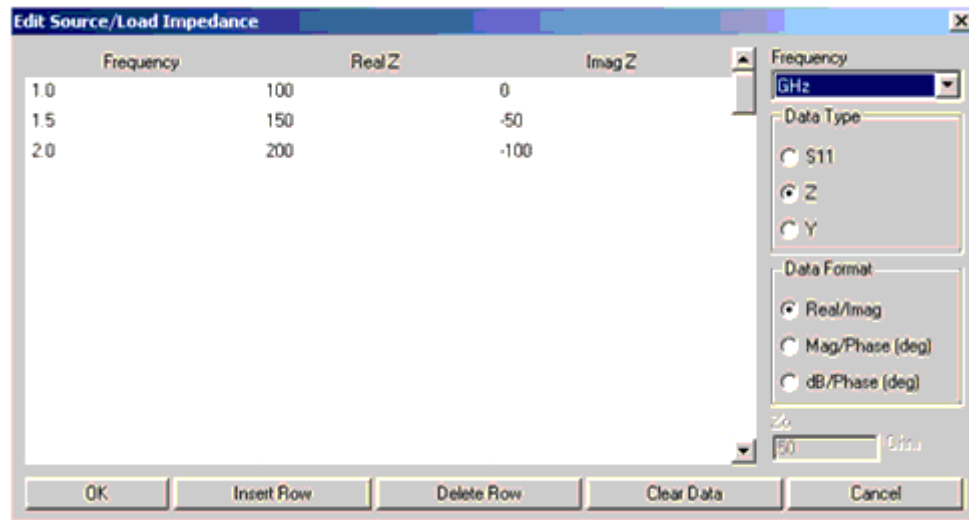
Terminations

For transformers, the terminations must be resistive with unequal values. As such, only the *R* input boxes are available for transformers. For other matching networks, the terminations can be input using lumped components networks, complex impedances, and S-parameter files. Usage for these different types is:

- **Lumped Component** - Choices include Resistive, Series RL, Series RC, Parallel RL, Parallel RC, Series RLC, Parallel RLC, where R = resistance, L = inductance, and C = capacitance. Component values must be specified by the user. For lowpass networks, choices are limited to Resistive, Series RL, and Parallel RC. For highpass networks, choices are limited to Resistive, Series RC, and Parallel RL.
- **Complex Impedance** - The impedance is interpreted as frequency independent, expressed in the form $50 + j \times 10$ Ohms. This input approach is useful for narrowband matching. If the true impedance varies significantly with frequency, better accuracy is obtained by specifying the termination using an S-parameter file or manually entering the data using the spreadsheet data entry capability.
- **S-Parameter File** - Any termination can be represented using a file in Touchstone format representing 1-port parameters (**.s1p*). The impedance can be specified in

S, Z, or Y parameters. For details on data file format, refer to the *Circuit Simulation* manual under *SnP format*. The Browse button launches a window to enable selection of the file.

- **Manual Data Entry** - The complex impedance - specified as an impedance, admittance, or reflection coefficient - can be entered as a function of frequency manually. When the source or load impedance is specified as Manual Entry, the Edit button can be used to open a spreadsheet useful for entering frequency/impedance pairs.

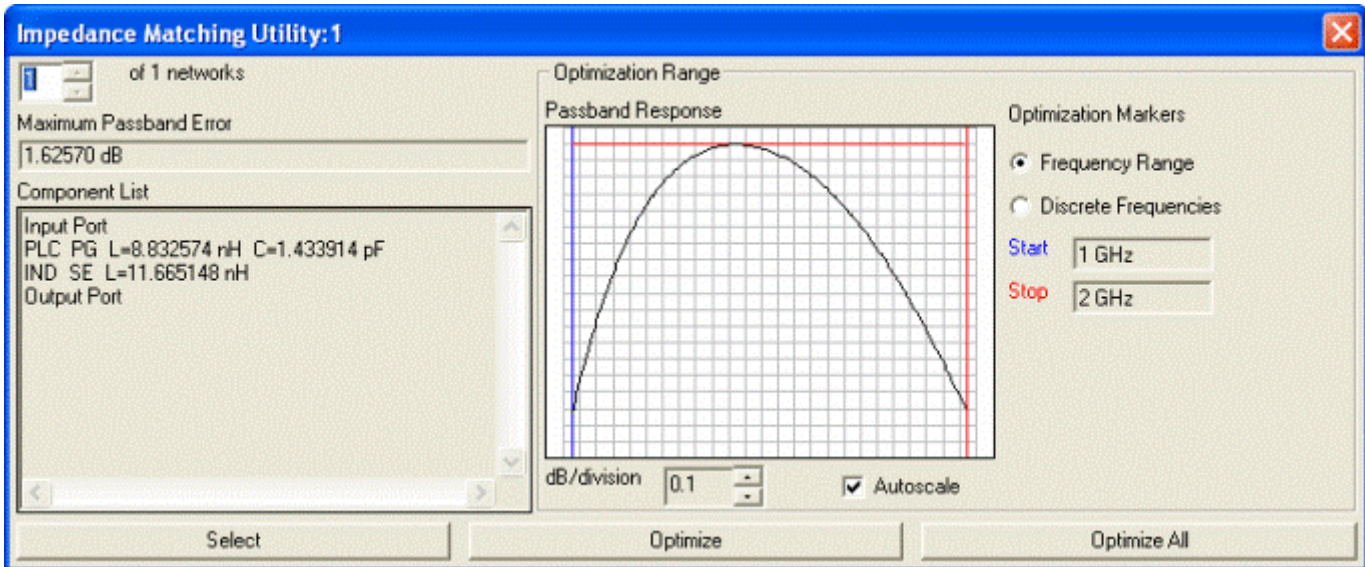


- **Interpret as Input/Output Impedance** - These options are available for three cases of source and load impedance; complex load, S-parameter file, and Manual entry. Use the Interpret as Input Impedance option to specify that the value you have entered is of impedance looking into the device (S-parameters of the measured device, for instance). Use the Interpret as Output Impedance option to specify that the value you have entered is of impedance looking out from the device (impedance you want to see). For more information, see *Designing with an S2P File* (dgfilter).

Design

The design is accomplished using one of the these methods.

- Click **Design** on the *Matching Assistant* tab.
- Click **Design** on the utility window toolbar.
- Choose **Tools > Auto-Design** from the utility window menu. After completion of the synthesis, a dialog box appears.



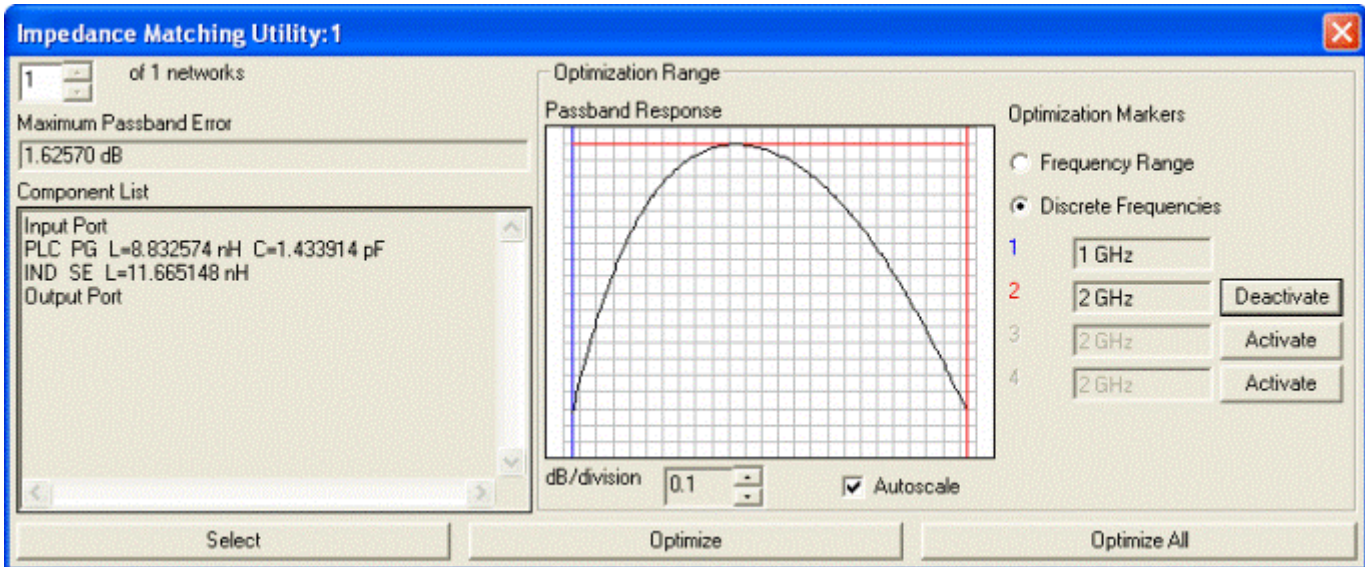
Optimization range

All networks can be viewed using the spin box. Each network can be viewed in two places:

- Dialog Box - Shows a text based description of the current network.
- Schematic Window - Shows the actual drawing of the current network.

For each network, the maximum error in the passband response in dB (taken with respect to the ideal flat or sloped response) appears in the dialog box. The response over the specified passband is also shown in an interactive graph. The scale on this graph can be changed manually using the spin box immediately below the graph. Checking the Autoscale box will automatically choose the scale to fit the response within the graph area.

The response of the matching network can be optimized from this dialog by clicking the Optimize button. The vertical lines on the graph, which by default lie at the edges of the band, are markers used for specification of the optimization frequencies. These markers can be moved by clicking and dragging them with the mouse, with the marker frequency being displayed in the corresponding text box to the right of the plot (the markers and labels for the text boxes are color coordinated). If the radio box for Frequency Range is selected, the optimization will be performed to minimize the Maximum Error over the range of frequencies between the two markers. If the radio box for Discrete Frequencies is selected, initially only a single marker is present. Up to three additional markers can be added by clicking the appropriate Activate button. Each added marker can also be removed by clicking the corresponding Deactivate button. Under this option, the optimization will be performed to minimize the Maximum Error at the frequencies indicated by the markers. Clicking the Optimize All button sequentially optimizes all networks found using the optimization parameters displayed. This optimization process can be canceled from the progress indicator that appears after the optimizer is launched. After the optimization is complete, the updated network appears in the dialog box and on the schematic.



Discrete optimization points

Synthesis Technique

Two different techniques are available for lumped element matching network synthesis: *Analytic* and *Real Frequency*.

- *Analytic* - For this method, a Chebyshev filter is chosen that can completely or partially absorb the source and load reactances, as outlined in [1], [2]. If the specified network order generates reactance topologies at the ends of the network that cannot absorb the specified terminations, the Utility informs the user that the network order is increased by one. This synthesis procedure is very robust, particularly for terminations that are modeled as lumped components. For terminations specified as a complex impedance, the Utility computes the simplest lumped component topology that produces this impedance at the band edge or center frequency. For terminations specified using an S-parameter file or manual entry, the Utility generates a lumped component model for the specified impedance variation with frequency.
- *Real Frequency* - This method uses the basic Chebyshev matching capability of the *Analytic* approach. However, application of the technique is modified by breaking the frequency band into small pieces, performing the match over this small band by finding a lumped component fit to the impedance given, and retaining the networks with the lowest insertion loss. Typically, optimization is required to obtain a good match over the entire passband. This approach is useful for loads that are not well modeled using the simple lumped component network choices given. For lowpass or highpass networks with $N = 2$ or bandpass networks with $N = 1$, this method synthesizes narrowband 2 component matching networks (L networks), retaining those that provide the best match over the band.
- *Transformers* - Lumped element transformers provide a pseudo-bandpass response to match two real and unequal resistances over a specified frequency band. The approach uses a transformation of a lowpass filter network to achieve the match [1],

[3]. The quality of the match in terms of passband error depends upon the frequency bandwidth chosen as well as the ratio of the terminating impedances. Distributed element transformers create a true bandpass response over the band.

- *Narrow Band Matching Networks* - The lumped two element (EII) matching network as well as the single stub matching network provide exact matching at a single frequency.

Designing with an S2P File

Use these steps for designing with an S2P file:

1. For input match, start with a resistive source of 50 Ohms, load pointing to S11 of the S2P file. Design optimize "input match." You need to optimize repeatedly to improve the performance, until you see not much change.
2. For output match, start with S22 of the S2P file as source, load set to 50 Ohms. Design and optimize.



Note

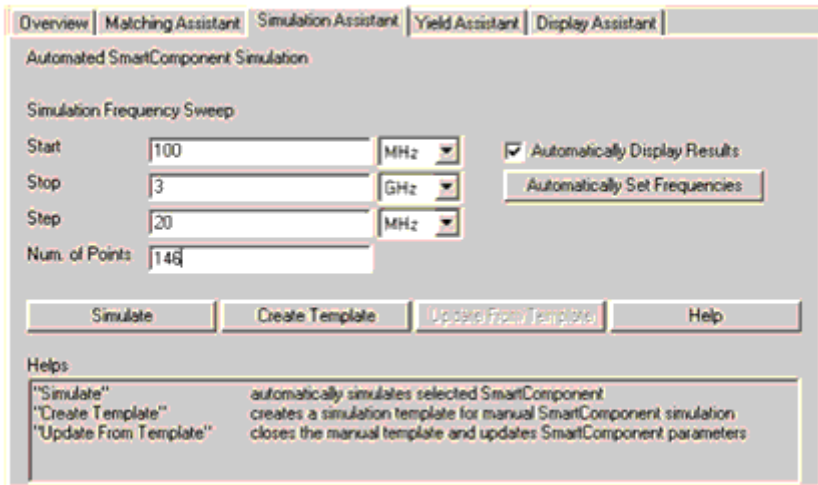
You do not have to set the interpret as input/output, so DO NOT choose those buttons at all while designing with S2P files. This button essentially toggles whether the program takes the conjugate of the data you enter or not. Sometimes you collect impedance data for the device you have, or sometimes it is for the impedance you want. So, effectively, it changes the perspective of whether you are looking into the DUT or looking into the matching circuit. This is used mostly while using the Manual entry mode for Impedances.

3. You can try using analytical or higher order to see whether you can improve the performance further.

Simulation Assistant

The Simulation Assistant is used to analyze the design contained within a SmartComponent. The Assistant creates a simulation circuit around the SmartComponent, then automatically performs the appropriate simulation. If set, the Assistant automatically displays the simulation results.

The Simulation Assistant is accessed using the Matching Utility window, where full simulation control is enabled from the *Simulation Assistant* tab. Basic simulation can also be accomplished using the utility window menu and toolbar.



For all simulation operations, the selected SmartComponent is designed if necessary, a simulation schematic is created, the simulation is performed, and the results are displayed. The simulation frequency sweep must be specified on the *Simulation Assistant* tab in the utility window as described in detail below.

Simulation Frequency Sweep

The simulation frequency sweep is specified on the Matching Utility window. While performing the simulation from the utility window, select the Simulation Assistant tab and specify the sweep by entering the start frequency, stop frequency, and either frequency step size or number of points. The values entered are stored in the selected SmartComponent (as displayed in the *SmartComponent* drop-down list box) and are recalled each time this SmartComponent is selected.

Displaying Results Automatically

If you click the *Automatically Display Results* button on the utility window Simulation Assistant tab, the simulation results are displayed automatically after completion of the analysis.

Starting the Simulation

The simulation can be accomplished using one of these methods.

- Click **Simulate** on the *Simulation Assistant* tab.
- Click **Simulate** on the utility window toolbar.
- Choose **Tools > Auto-Simulate** from the utility window menu.

Simulation Templates

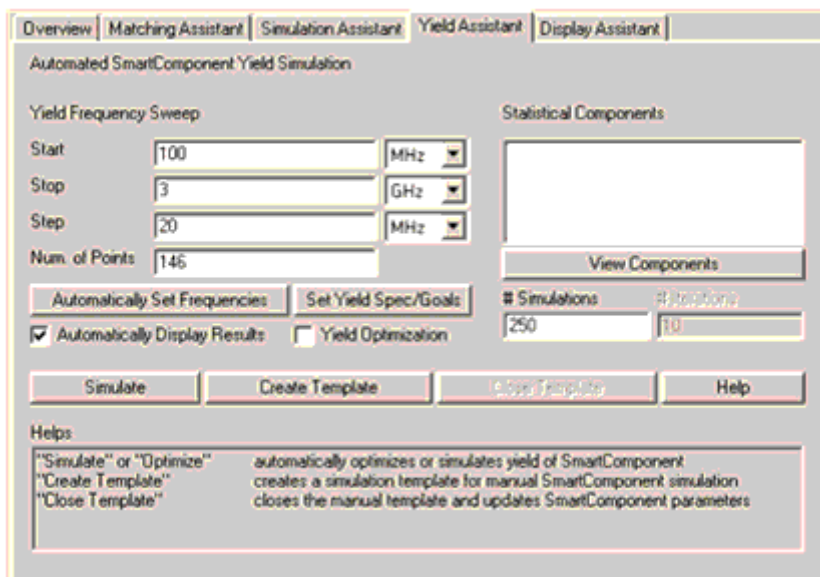
In some cases, you can simulate the SmartComponent manually.
To generate a simulation schematic around the selected SmartComponent:

1. Click **Create Template** on the *Simulation Assistant* tab.
2. You can examine or modify the simulation schematic, then manually start the simulation by choosing **Simulate > Simulate** from the Schematic window.
3. When you are finished, click **Update from Template** on the *Simulation Assistant* tab to transfer any changes you have made to the SmartComponent on the simulation schematic to the original SmartComponent and redesign if necessary.
4. Close the simulation schematic by choosing **File > Close Design** from the Schematic window menu, although this results in loss of any changes you have made to the SmartComponent.

Yield Assistant

The Yield Assistant is used to analyze the design sensitivities contained within a SmartComponent. The Assistant creates a yield analysis circuit containing the SmartComponent, then performs a simulation. By sweeping the component values for a selected set of components in the network, this analysis generates a probability density function of the performance given statistical variations of the component values. The probability that the performance remains within the specified bounds is the yield of the network.

The Yield Assistant is accessed using the Matching Utility window, where full control is enabled from the *Yield Assistant* tab. Basic yield analysis can also be accomplished using the utility window menu and toolbar.



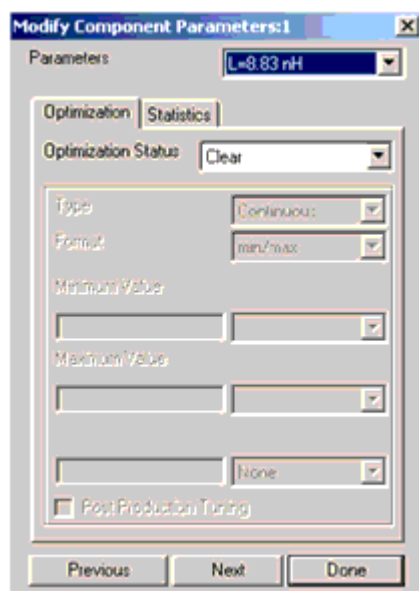
The selected SmartComponent must be designed before yield analysis can be performed. The analysis proceeds by statistically sweeping the value of each selected component and analyzing the impact of this component value variation on the frequency response of the network.

Simulation Frequency Sweep

The simulation frequency sweep is specified on the *Yield Assistant* tab of the Matching Utility window. From this tab, specify the sweep by entering the start frequency, stop frequency, and either frequency step size or number of points. The values entered are stored in the selected SmartComponent (as displayed in the *SmartComponent* drop-down list box) and are recalled each time this SmartComponent is selected.

Statistical Components

The Statistical Components list-box displays all components that are statistically varied during simulation. Clicking Update opens the dialog box (shown below) to simplify the process of selecting components.



The matching network is shown in the schematic with the currently selected component highlighted. If you want this component value to be swept statistically during the analysis, select Enabled in the Statistics Status box. You can then specify the parameters of the statistical sweep. After you have specified all parameters for a component, clicking Next takes you to the next component in the network. The analysis allows for a maximum of 4 components to be selected at one time. After you have finished specification, you can click Done from the dialog box to return to the Yield Assistant tab. Clicking View under the Statistical Components box opens a dialog box from which you can view a summary of the

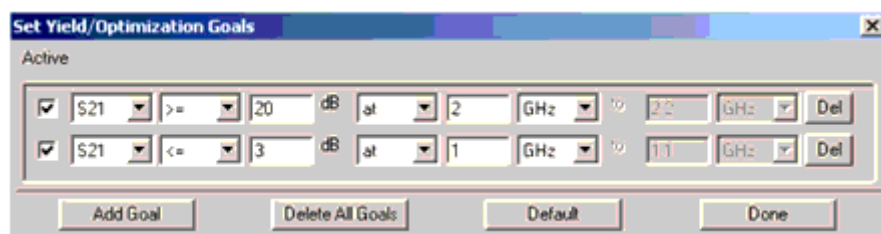
statistical parameters for each selected component. There are also buttons to take you directly to the Modify Component Parameters dialog from this summary dialog to facilitate editing of the statistical sweep parameters.

The *# Simulations* parameter specifies the number of Monte Carlo simulations that are used to estimate the statistical behavior of the network. Increasing the number of simulations increases the statistical sample size and therefore provide a better estimate of the performance at the expense of increased computational time.

Yield Optimization

The network component values can also be optimized so that the performance is less sensitive to component value variations. This can be accomplished by selecting the *Yield Optimization* check box. In this case, the optimization requires that a set of performance goals be specified for the network. The yield is defined as the probability that the network frequency response satisfies these performance specifications given the statistical properties of the individual components. Each component has a default set of goals depending on the type of response (lowpass, bandpass, etc.). Each goal specifies the insertion loss performance of the network in dB and can represent a specification that the value stay above or below the stated level. The specification can be at a single point, or over a given frequency band. For a single frequency point, set the pulldown to "at", and set the frequency parameter. For a range of frequencies, set the pulldown to "from", which will activate both frequency parameters in order to specify the frequency range. To modify the default goals:

1. Press Set Yield Spec/Goals button on the Yield Assistant tab to open the dialog.
2. Add or delete goals:



- Use the **Add Goal** button to add new goals.
- Use the **Del** button to the right of the goal to delete individual goals
- Use the **Delete All Goals** button to delete all goals. The goals can be reset to their default values using the **Default** button.
- A goal is used in the analysis only if the *Active* box at the left of the goal line is checked.

The *# Iterations* parameter available for Yield Optimization specifies the maximum number of optimization iterations that the simulation performs to try to find the appropriate network component values.

Displaying Results Automatically

If the *Automatically Display Results* box on the utility window Yield Assistant tab is selected, the simulation results is displayed automatically after completion of the analysis.

Starting the Simulation

The yield analysis can accomplished using one of these methods.

- Click the **Simulate** button on the **Yield Assistant** tab.
- Click the **Simulate Yield** button on the utility window toolbar.
- Choose **Tools > Auto-Simulate Yield** from the utility window menu.

Yield Results

For each component (up to a maximum of 4) chosen for yield analysis, a yield sensitivity histogram is displayed. The yield definition can be changed on the first page of the display by setting passband frequencies Fp_1 and Fp_2 as well as the maximum insertion loss at these frequencies, and stopband frequencies Fs_1 and Fs_2 as well as the minimum insertion loss at these frequencies. Other pages in the display show the overall statistics of the yield as well as the frequency response for each of the Monte Carlo simulations.

Yield Templates

In some cases, you can simulate the SmartComponent manually.

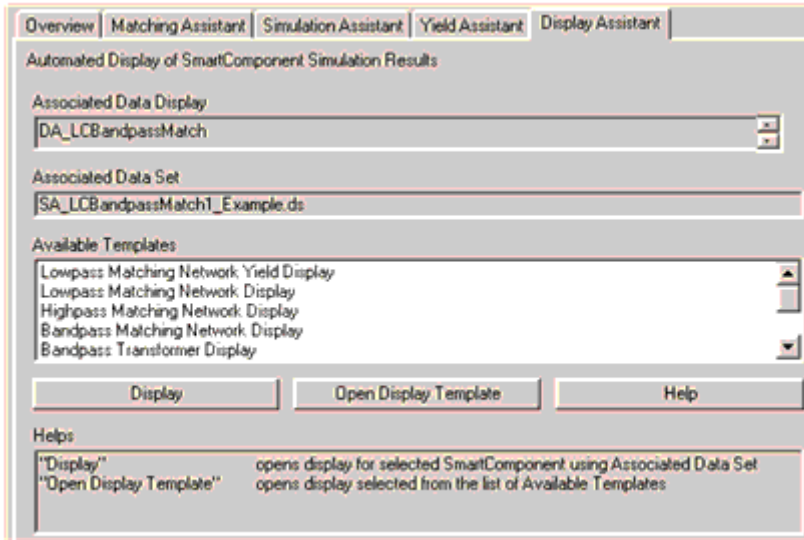
To generate a simulation schematic around the selected SmartComponent:

1. Click **Create Template** on the *Yield Assistant* tab.
2. After examining or modifying the simulation schematic, manually start the simulation by choosing **Simulate > Simulate** from the Schematic window.
3. When you are finished, click the **Close Template** button on the Yield Assistant tab to return to the original design. You can also manually close the simulation schematic by choosing **File > Close Design** from the Schematic window menu.

Display Assistant

The Display Assistant is used to easily and quickly display the performance of a SmartComponent. The display templates are preconfigured display files that provide a comprehensive look at the performance of the component. You can create your own displays or modify the included display templates using the built in features of Advanced Design System, but in most situations, the included display templates provides all the information you need.

The Display Assistant is accessed using the Matching Utility window, where full display control is enabled from the Display Assistant tab. Basic display selection can also be accomplished using the utility window menu and toolbar



Before using the Display Assistant, a valid dataset from a simulation of the selected SmartComponent must exist in the current workspace data directory. This simulation can be conveniently accomplished using the Simulation Assistant. Refer to *Simulation Assistant* (dgfilter) for details on this step.

Opening a Display

To display results from a SmartComponent simulation using the utility window, select the SmartComponent from the *SmartComponent* drop-down list box in the upper right corner of the utility window. The display is then launched using one of the these methods.

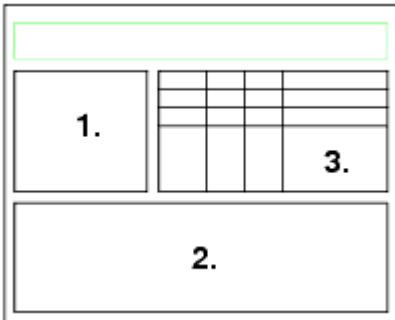
- Click **Display** on the Display Assistant tab.
 - Click **Automatically Display Simulation Results** on the utility window toolbar.
 - Choose **Tools > Auto-Display** from the utility window menu.
- If no valid dataset exists for the selected SmartComponent, the Display button on the Display Assistant tab is de-activated. If the toolbar or menu are used to try to display the results, a message appears indicating that no dataset exists.

Display Template Features

The display templates opened by the Display Assistant have common features that are discussed here. For features unique to the display templates of some SmartComponents, refer to *SmartComponent Reference* (dgfilter).

Basic Layout

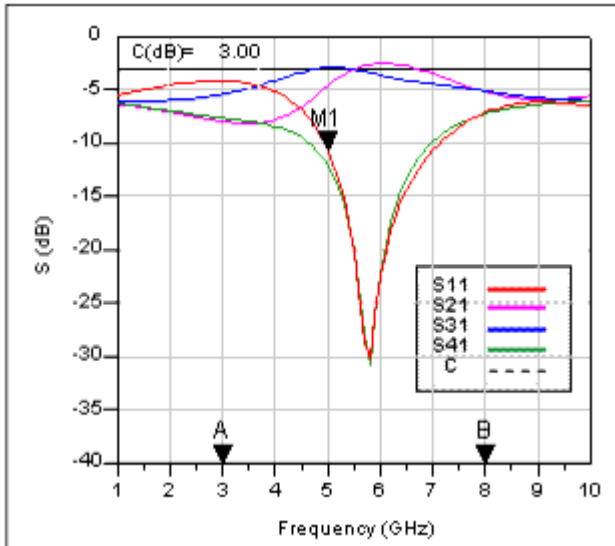
Basic Layout of Display Templates (dgfilter) shows the basic layout of the display templates. Area one of the display template contains a graph of the most important parameters of the SmartComponent. Area two contains several graphs that give a comprehensive look at the component's performance. Area three contains a table listing the basic specifications and performance of the component.



Basic Layout of Display Templates

Typical Area One Graph

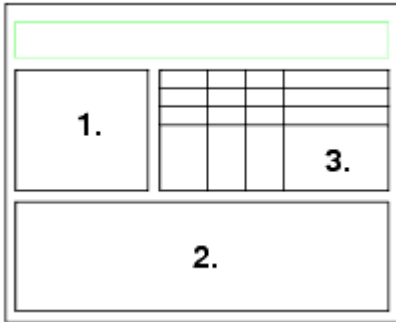
The following figure shows a typical graph from area one of a display template.



Basic Layout

Basic Layout of Display Templates (dgfilter) shows the basic layout of the display templates. Area one of the display template contains a graph of the most important

parameters of the SmartComponent. Area two contains several graphs that give a comprehensive look at the component's performance. Area three contains a table listing the basic specifications and performance of the component.

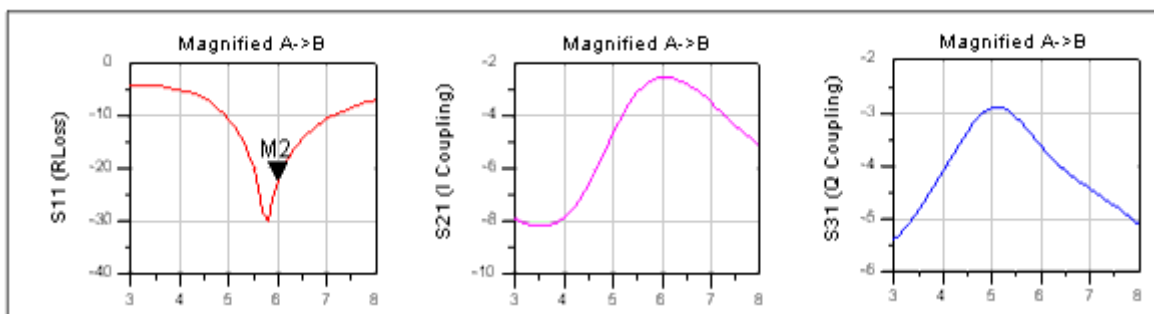


Basic Layout of Display Templates

The frequency range of the graph is determined by the Simulation Assistant. As you change the frequency range in the Simulation Assistant, this graph updates automatically. The markers A and B are used to define the frequency range of the graphs in area two. This feature is used to zero in on the region of interest and obtain a comprehensive look at the component's performance. The marker M1 can be moved by dragging the marker with the mouse. The performance at the frequency given by M1 is shown in the table in area three.

Typical Area Two Graphs

Typical Graphs from Area Two (dgfilter) shows typical graphs from area 2 of a display template.



Typical Graphs from Area Two

These graphs provide a quick, comprehensive look at the component's performance. Their frequency range is determined by the location of the "A" and "B" markers found in the main graph. Any markers such as M2 shown here can be moved by dragging them with

the mouse. Performance criteria at the marker frequency displays in the table in area three.

Typical Area Three Templates

Typical Table from Area Three (dgfilter) shows a typical table from area three of a display template.

| | F | S11 | S21 | S31 | S41 | PhaseD |
|--------------------------|------|--------|-------|-------|--------|--------|
| Desired Center Frequency | 5.00 | -10.72 | -4.64 | -2.91 | -12.15 | 84.94 |
| Actual Center Frequency | 5.80 | -30.15 | -2.64 | -3.42 | -30.81 | 90.23 |
| Change/Worst A->B | 5.00 | -4.20 | -8.16 | -5.41 | -7.22 | 70.77 |
| Marker M1 | 5.00 | -10.72 | -4.64 | -2.91 | -12.15 | 84.94 |
| Marker M2 | 6.00 | -22.47 | -2.54 | -3.65 | -22.25 | 89.63 |

| | |
|--|--|
| F: Frequency (GHz) 1: Input Port 2: In-phase (I) Port 3: Quadrature (Q) Port 4: Isolated Port C: Desired Coupling PhaseD: I-Q Phase Difference | Note: Change/Worst A->B provides performance over the range from marker A to B. The change of F and PhaseD are given, and the worst case S-parameter values are given. |
|--|--|

Typical Table from Area Three

The white rows show the specifications and important performance criteria for the component. The gray rows show the performance criteria at the user defined marker frequencies. The box below the table provides explanatory information for the table.

Using Display Templates in Other Applications

In some cases, you can use one of the display templates provided with the Impedance Matching Utility for other applications.

To gain access to one of the templates:

1. Select the template from the **Available Templates** field and click the **Open Display Template** button on the utility window Display Assistant tab.
2. Insert a dataset of your choice using the **dataset** pull-down list box in the upper left corner of the display. If some parameters in the display template are not defined in the selected dataset, you can make appropriate modifications to the display. These changes can be saved using the commands in the display File menu.

Transformation Assistant

After a Matching Utility SmartComponent has been designed, the lumped inductors and capacitors can be transformed into equivalent distributed element counterparts using the *Transformation Assistant*. This feature enables you to quickly and easily transform an ideal filter topology to a form that is realizable for high-frequency systems.

Opening the Transformation Assistant

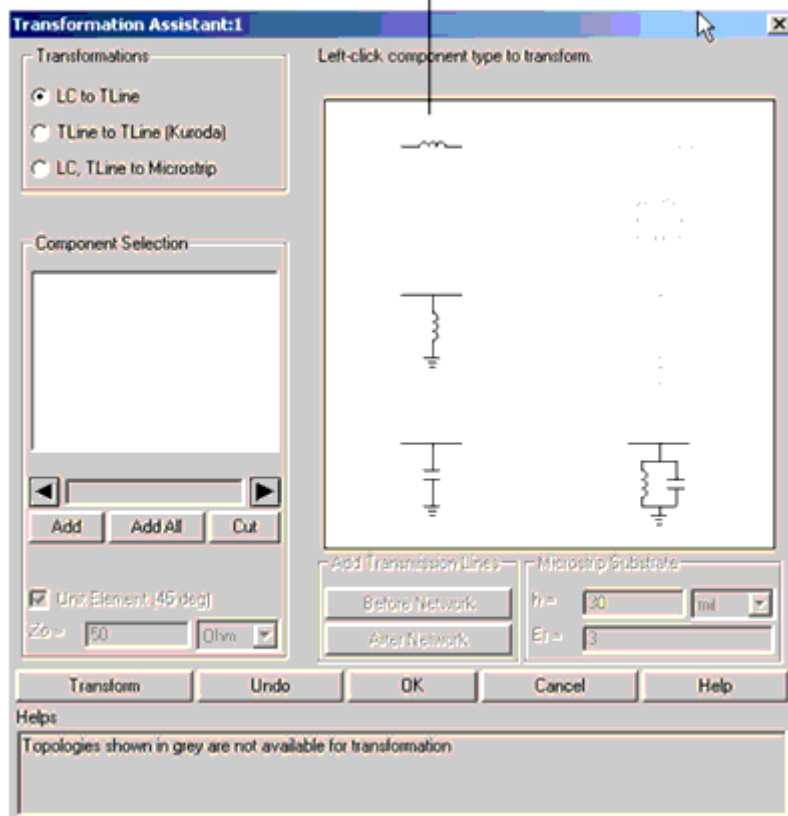
The *Transformation Assistant* dialog box is accessed from the Matching Utility window, either by selecting **Tools > Distributed Element Transformations** from the Tools menu or from the Toolbar.

Launch Transformation Assistant



When the Transformation Assistant is opened, the SmartComponent subnetwork appears in the schematic window and a dialog box is opened. The transformations are accomplished using the controls on the dialog.

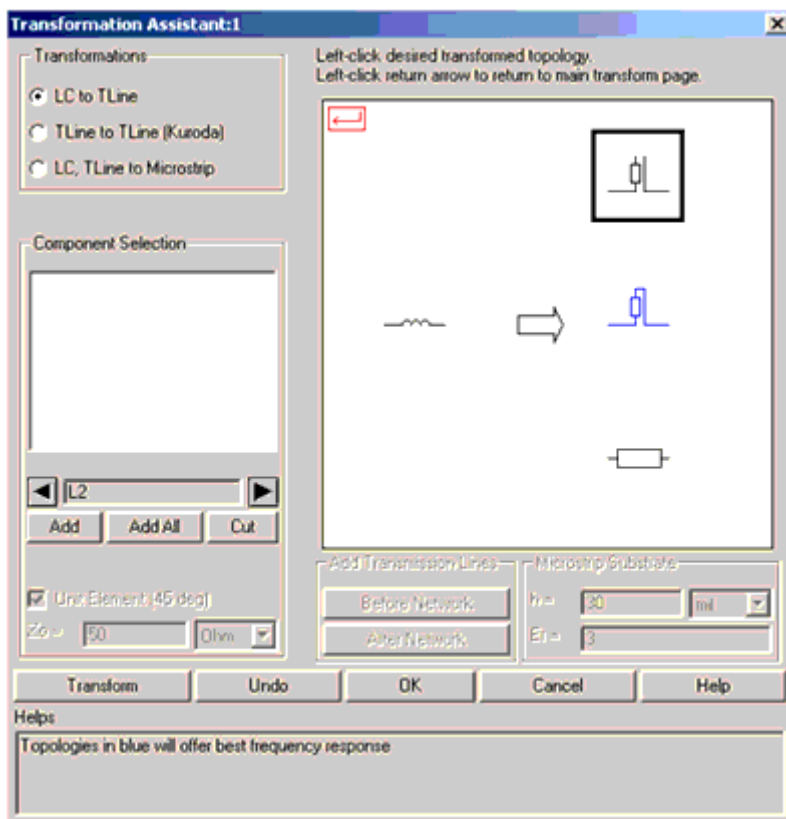
Select a transform to view the components that can be transformed.



Selecting a Transformation Type

The type of transformation to be applied is selected from three options:

- LC to TLine - Transforms lumped inductors and capacitors to ideal transmission line elements. Eight different inductor/capacitor combinations can be transformed to different series lines, series stubs, or shunt stubs.
- TLine to TLine (Kuroda) - Apply Kuroda's identities in order to transform series short circuited stubs to shunt stubs that are realizable in microstrip and other printed transmission line technologies.
- LC, TLine to Microstrip - Transforms lumped inductors and capacitors as well as ideal transmission line structures to microstrip equivalent components. Application of this transformation requires a valid license for the Passive Circuit DesignGuide. After a transform has been selected, the graphical area displays the components that can be transformed using the current selection. Black components represent elements included in the original circuit available for transformation, while gray components represent elements not included in the original circuit. From this graphical area, use the left mouse button to select one of the available component types. The graphical area changes to reveal the different distributed element equivalents available for substitution. *Transformations Available for Series Inductor Circuit* (dgfilter) shows the transformations available when a series inductor circuit has been selected.



Transformations Available for Series Inductor Circuit

From this point, the type of equivalent network can be selected using the left mouse button from the available structures at the right of the graphics area. A box highlights the currently selected structure. Text at the bottom of the window changes as different selections are made, providing some help concerning the particular transform selected.

Component Selection

After the type of circuit component to be transformed is selected, the actual circuit elements to apply the transform to can be selected using the *Component Selection* tools. As the left and right arrows within this area are clicked, valid components within the original circuit are highlighted, and their instance names (i.e., L1, C4) appears in the text box on the *Transformation Assistant* dialog. The three buttons are used to select which specific components should be subject to the current transformation:

- **Add** - Add the currently selected component(s) to the transformation list.
- **Add All** - Add all circuit components of the appropriate type to the transformation list.
- **Cut** - Remove the currently selected (highlighted) item in the transformation list from the list.

Transformation Buttons

The buttons across the bottom of the dialog box are used to accomplish the transformation on the selected components.

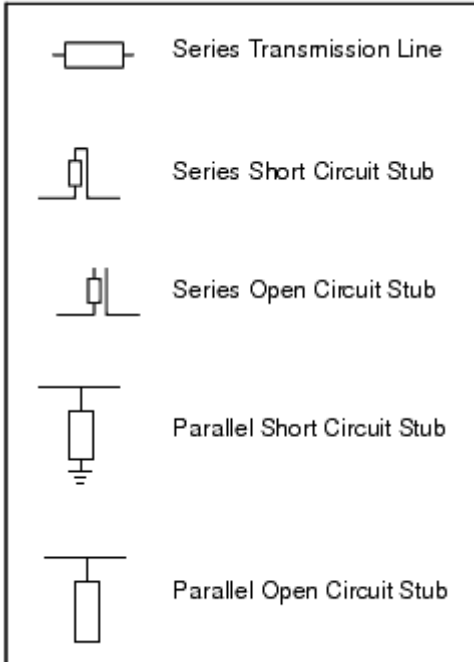
- **Transform** - Apply the selected transform to the component in the transformation list.
- **Undo** - Undo the last performed transform. This button can be used repeatedly to undo all previous transformations.
- **OK** - Accept the current transformed circuit and close the dialog box. After the transformed circuit has been accepted, transformations cannot be undone.
- **Cancel** - Close the dialog box and revert to the original, untransformed circuit.

Changing Component Type

After all transformations have been made on a specific component type (such as series inductor), use the left mouse button to click the red return arrow in the upper left hand corner of the graphic area (or use the right mouse button to click anywhere on the graphic area) to return to the main component selection page. Then you can select another component type and repeat the transformation steps for this new selection.

Transmission Line Types

Five basic transmission line elements can be produced using the Transformation Assistant are:



Additional Transformation Functions

Unit Element

For certain transformations, either the electrical length or characteristic impedance of the resulting transmission line must be specified by the user. If the *Unit Element* box is checked, the resulting transmission line has an electrical length of 45 degrees and the characteristic impedance is computed appropriately. If the *Unit Element* box is unchecked, then the *Characteristic Impedance* (Z_0) box becomes active and the computation uses this characteristic impedance to compute the appropriate length.

Characteristic Impedance

The *Characteristic Impedance* (Z_0) box is used to specify the transmission line characteristic impedance for certain transformations. In cases where either the electrical length or the characteristic impedance can be specified, this box works in conjunction with the Unit Element box as discussed above. In certain other cases, this *Characteristic Impedance* (Z_0) box is used alone. For example, when adding lines to the front or end of a network as part of Kuroda's identities, the characteristic impedance of the

transformation can be specified using this box.

Adding Transmission Lines

As part of the *TLine to TLine* transformation, unit element (45 degree electrical length) transmission lines can be added to the front or end of the network. The characteristic impedance of these lines is specified using the *Characteristic Impedance (Z0)* box. Such lines can be added as needed during the transformation process. Addition of these lines changes the phase response and, if the characteristic impedance is not equal to the network terminal impedance, the magnitude response of the network.

Microstrip Substrate

When performing *LC*, *TLine to MLine* transformations, the microstrip substrate thickness (h) and relative permittivity (ϵ_r) must be specified. All microstrip elements within a design must share the same substrate parameters. The substrate parameters used in the final design are the values that appear in the boxes after the final transformation step.

TLine to TLine Transforms (Kuroda Identities)

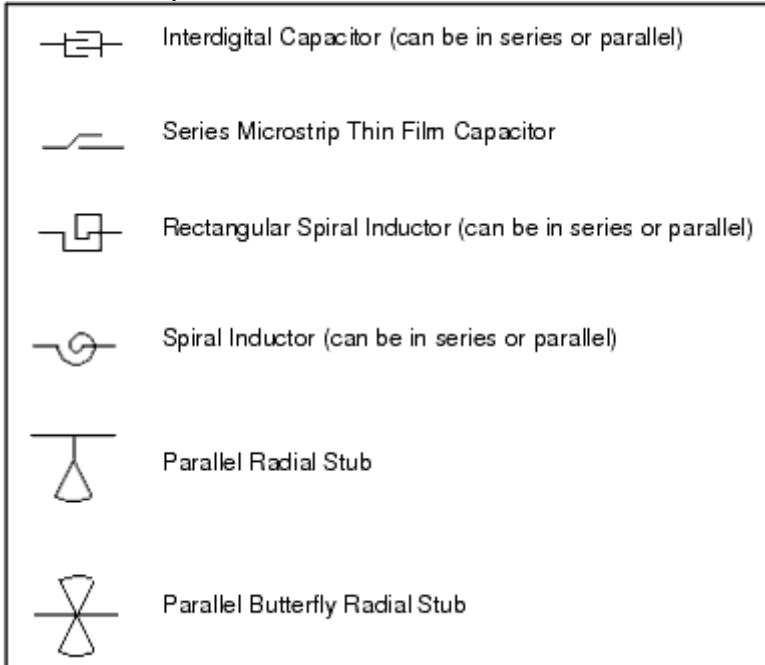
The TLine to TLine transforms are typically used to transform series short circuited stubs to parallel open circuited stubs in preparation for implementation in planar transmission line technologies. However, these operations only work on Unit Element lines with electrical lengths of 45 degrees. Therefore, when performing lumped to ideal distributed transformations, you must perform substitutions that conform to this Unit Element specification. Preferred stubs (highlighted in blue on the graphical area) as well as series transmission lines (transformed with the *Unit Element* box checked) can be transformed in this way. When adding transmission line elements before or after the network, the electrical length is 45 degrees and only the characteristic impedance must be specified.

Microstrip Transforms

The *LC*, *TLine to MLine* transformations form a somewhat unique class of operations. This set of transformations takes lumped inductor/capacitor combinations as well as ideal series transmission lines and shunt transmission line stubs (obtained from the *LC to TLine* transformations), and converts them to microstrip. Note that series stubs cannot be used in this transformation since these cannot be realized in microstrip.

Note
This set of transforms is only available if a valid license for the Passive Circuit DesignGuide exists.

In addition to the standard transmission line topologies, certain lumped elements can be replaced with SmartComponents from the Passive Circuit DesignGuide. The available SmartComponents are:



When making such substitutions, the design capabilities of the Passive Circuit DesignGuide are used to realize the topologies. In this case, however, the design procedure is approximate, and some tuning of the elements is required before the substituted device offers the correct performance. In such cases, after completion of the transformation, push into the SmartComponent on the schematic window and open the Passive Circuit DesignGuide control window. The Simulation and Optimization Assistants in the Passive Circuit DesignGuide SmartComponent can then be used to quickly and efficiently tune the performance of each individual element.

Using SmartComponents in Impedance Matching Utility

This Utility provides several SmartComponents representing matching networks. SmartComponents are smart sub-network designs that provide the container for specification parameters and a schematic representation of the design when placed into a design. The utility provides automated design and analysis for these SmartComponents.

Placing and Editing SmartComponents

SmartComponents are placed, copied, edited, and deleted like other components in ADS. The basics of placement, copying, editing, and deleting are described briefly in this section.

Note
For more information on ADS basic features see *Schematic Capture and Layout* (usrguide).

The components are placed in the schematic window by selecting the SmartComponent from the palette and clicking at the point where you want to place the component in the schematic.

You can display the SmartComponent palette in one of these ways:

- Select *Tools > Impedance Matching* to open the Impedance Matching Utility. Display the SmartComponent palette by selecting the *Component Palette - All* button from the utility window toolbar or click *View > Component Palette - All* from the utility window menu. All contains all of the SmartComponents.
- Select the *Impedance Matching* palette from the Component Palette drop-down list box in the Schematic window toolbar (directly above the palette).

Placing SmartComponents

To place a SmartComponent in the Schematic window:

1. In the Schematic window, select the component from the SmartComponent palette.
2. Click within the schematic window at the location where you want to place the SmartComponent.
 - You can change the orientation of the SmartComponent *before* placement by selecting from the *Insert > Component > Component Orientation* commands or by selecting *Rotate by -90* repeatedly from the schematic toolbar.
 - The place component mode remains active until you choose End Command from the schematic toolbar.

Changing Position and Orientation

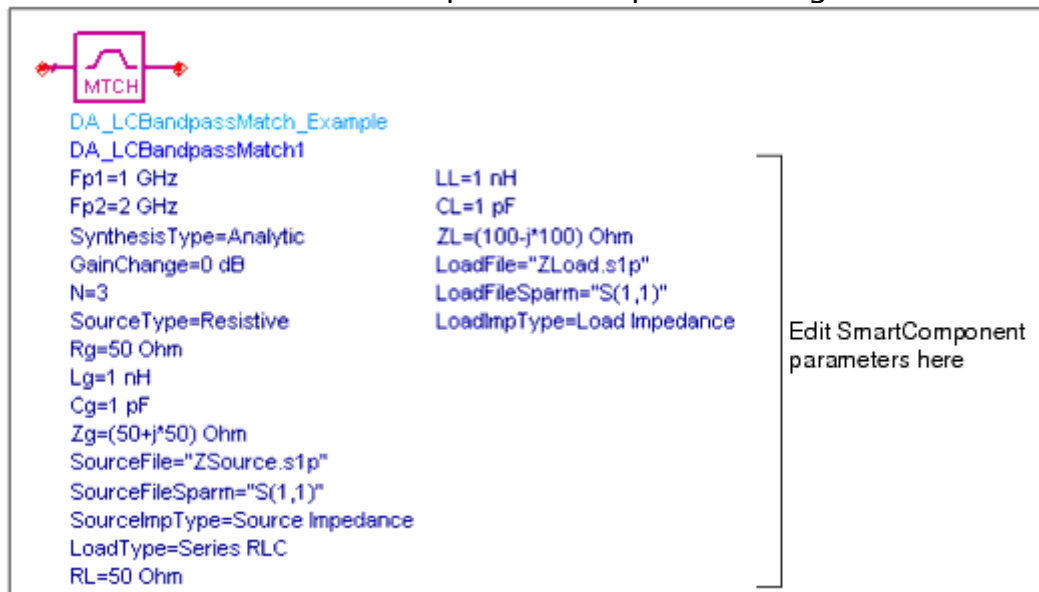
A SmartComponent is moved by dragging it to any location in the Schematic window. To change the component's orientation:

1. Select **Edit > Advanced Rotate > Rotate Around Reference** from the Schematic window or select **Rotate Items** from the toolbar.
2. Click the SmartComponent you want to use.
3. Rotate the component. The rotate mode remains active until you select End Command from the toolbar.

Editing SmartComponents

Specifications of the SmartComponent are entered directly on the Matching Assistant tab on the Control window. You can also modify the specifications in one of these ways:

- Click the SmartComponent parameters in the schematic window and change them (see *The LC Bandpass Matching Network Component (dgfilter)*.)
- Double-click the SmartComponent to open a dialog box containing all parameters



The LC Bandpass Matching Network Component

The SmartComponent design (schematic) can be viewed by pushing into the SmartComponent's subnetwork. See *Examining the Matching Component Design* (impmatchutil).

A SmartComponent subnetwork is empty until schematic is generated (see the note in the section *Placing and Editing SmartComponents* (dgfilter)).

Copying SmartComponents

SmartComponents can be copied within a Schematic or to another Schematic window.

Copying Within a Schematic

To copy a SmartComponent to the same schematic:

1. Click the SmartComponent to be copied.
2. Select **Edit > Copy** and then **Edit > Paste** from the schematic window.
3. Click where you want the copy placed.

Copying Between Schematic Windows

To copy a SmartComponent to another Schematic:

1. Click the SmartComponent to be copied.
2. Select **Edit > Copy** from the Schematic window.
3. Display the schematic window you want to copy the SmartComponent to.
4. Select **Edit > Paste** to copy the SmartComponent to the schematic.
5. Click where you want the component placed.

Copying a SmartComponent as a Unique Design

Initially, all copied SmartComponents refer to the same SmartComponent design. When the *Design Assistant* is used to perform a design operation, the Design Assistant transforms each copied SmartComponent into a unique SmartComponent design. A design operation is accomplished from the Utility Control Window.

Deleting SmartComponents

SmartComponents can be deleted from a design like other components, but completely removing a SmartComponent's files requires the actions described here.

Deleting from Current Schematic Window

Following are the ways to delete a SmartComponent from the schematic window:

- Select the component and press the **Delete** key.
- Select **Delete** from the toolbar.
- Click **Edit > Delete** from the schematic window.



Note

This procedure does not remove the SmartComponent files from the workspace directory. To delete files from the workspace directory, see *Deleting from Current Workspace* (dgfilter).

Deleting from Current Workspace

To delete a SmartComponent and all associated files from your workspace:

1. In the Schematic window, select the SmartComponent.
2. In the utility window, select **Tools > Delete SmartComponent**. or on the toolbar, click **Delete** . This deletes the SmartComponent from the current schematic and removes all of its files from your workspace. The SmartComponent delete mode remains active until you select End Command from the schematic toolbar.

Deleting Manually Using File System

You can use your computer's file system to delete a SmartComponent by deleting the appropriate files in the network subdirectory of a workspace. Delete files that start with *DA_* or *SA_* , contain the SmartComponent title, and end with *.ael*, *.atf*, or *.wrk*.

Using SmartComponents as Standalone Components

After SmartComponents are designed and tested, they can be used as standalone components. The Matching Utility is not needed to use them in new schematic unless you wish to modify or analyze them. When using the SmartComponent in a schematic, however, the power supply pins (Vdd, Vcc, Vp, Vm) must be connected to a DC voltage source whose voltage level corresponds the parameter setting.

Using an Existing SmartComponent Within the Same Workspace

To use an existing SmartComponent within the same workspace:

1. Open the Component Library window by selecting **Insert > Component > Component Library** from the Schematic window or **Display Component Library**

List on the toolbar.

2. Select the Library name under **All Libraries** list at the left of the Component Library window. Available components are listed in the Components list at the right of the Component Library window.
3. Select the SmartComponent in the **Components** list.
4. Place the SmartComponent into your schematic by clicking in the Schematic window at the location you wish to place. The insert mode remains active until you click **End Command**.

Using an Existing SmartComponent in Any Workspace

A library of predesigned reusable SmartComponents can be created by placing the reusable SmartComponents in a workspace. This workspace can be included in any workspace and its SmartComponents can be accessed using the Component Library.

To use an existing SmartComponent in any workspace:

1. Open the Workspace where the SmartComponent needs to be inserted.
2. Open the Library in the Workspace by selecting **File > Open > Library**.
3. Open the Component Library window by selecting **Insert > Component > Component Library** from the Schematic window or **Display Component Library List** from the toolbar.
4. Select the Library name under **All Libraries** list at the left of the Component Library window. Available components are listed in the Components list at the right of the Component Library window.
5. Select the SmartComponent in the **Components** list.
6. Place the SmartComponent into your schematic by clicking in the Schematic window at the location where you wish to place the component. The insert mode remains active until you click **End Command**.